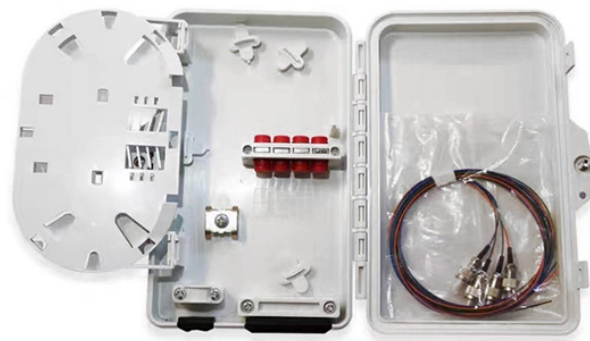
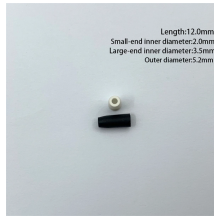


Items needed for grounding the distribution box



Items needed for grounding the distribution box



With this convenient distribution box with a standard pin cable you can connect up to 4 grounding products with a grounded wall socket or a grounded extension cord in a grounded wall socket.



Here are the steps on how to ground a power distribution box: 1. Preparation: First, you need to prepare some necessary tools, including grounding wire, grounding rod, voltmeter, insulating ...



Grounding electrode conductors must be connected at accessible points from the load end of service conductors, with specific rules for outdoor transformers and dual-fed services.



Each DISTRIBUTION BOX and controller must be grounded. On the US market, a 5.26 mm² (10 AWG) ground wire must be used, and in all other markets a 6 mm² must be used.



Learn how to select and install a grounding bar for electrical boxes, including sizing tips and ground bar options for metal enclosures.



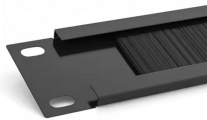
Whether you're a seasoned pro or just starting out, this comprehensive guide will give you practical insights into proper grounding techniques, with a special focus on how selecting quality materials ...



To safely ground a metal box, connect an equipment grounding conductor (typically a bare or green insulated wire) from the box to the main electrical panel's ground bus bar. Use a green ...



With this convenient distribution box with a standard pin cable you can connect up to 4 grounding products with a grounded wall socket or a grounded extension cord ...



- Providing ground mats to extend areas of equipotential.
- Employing insulating protective equipment or barricades to guard against any remaining hazardous electrical potential ...



There is a possibility that high-resistivity soils will need further grounding measures, such as the installation of deeper electrodes or the utilization of conductive backfill materials.



Effective grounding, or earthing, of the distribution system neutral is necessary to achieve several objectives, the most important of which is the safety of the public and utility personnel.



Connect the conductor from the panel ground bus or connector at the source to all items to which the conduits or raceways connect. Bond to a ground lug within each panel, box or equipment.

Contact Us

For more information, pricing, or custom solutions, please contact us:

Website: <https://indzawo.co.za>

Email: sales@indzawo.co.za

Phone: +27 71 296 8473

Address: 22 Quantum Street, Midrand, 1685, Gauteng, South Africa

This document is for informational purposes only. Specifications subject to change without notice.

