

Japan Low Voltage Complete Equipment Manufacturer



Overview

Browse 10,000+ certified products by category, function, or application — built for OEMs, builders, and distributors. Through tailored electrical solutions and attentive after-sales support, trusted by 110+ countries and regions. These. Boilers, Steam turbines, Gas turbines, Water turbines, etc. Transformers, Power conversion equipment power system, Inverters, Uninterruptible power. Fuji Electric founded in 1923, Japan, is a leading manufacturer of low and medium voltage distribution and motor control equipment such as magnetic contactors, thermal overload relays, molded case circuit breakers, air circuit breakers, miniature circuit breakers and much more. What is a technically oriented trading company?

Copyright (C) 2017 ASAHI SANGYO KAISHA, Ltd. Weatherproof: IP65-rated enclosures (-40°C to +70°C operation). Flexible terminations: 6~24 cable entries for 1kV/10kV systems. Plug-and-play deployment: Pre-assembled units (2.

Japan Low Voltage Complete Equipment Manufacturer



Electrical Equipment Supply GEYA offers high-quality products spanning the entire value chain—from low-voltage components to electrical controls and PV systems. Through tailored electrical solutions ...



Our low-voltage switchgear provides high performance and ease of operation in applications ranging from branch circuit protection to complex motor control demands.



Fuji Electric founded in 1923, Japan, is a leading manufacturer of low and medium voltage distribution and motor control equipment such as magnetic contactors, thermal overload relays, molded case ...



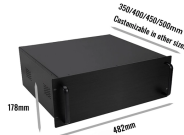
Products Drives & Controls AC Drives (Low voltage) AC Drives Motors Servo Systems PLC, Programmable logic controller HMI, Human machine interface Semiconductors Semiconductors ...



Chuanli Electric Co.,Ltd focuses on the research and development, production and sales of high and low voltage electrical equipment. Its products cover high voltage switch gear, box-type substation, low ...



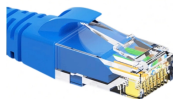
We comprehensively produce elements relating to distribution and control systems, including high and low voltage switchboards, control panels, distribution boards, and PDUs.



When exploring the low-voltage motor industry in Japan, several key considerations emerge. First, understanding the regulatory landscape is crucial, as Japan has stringent safety and efficiency ...



Lvma Electrical is a professional circuit breaker supplier offering MCB, MCCB, RCBO, and DC circuit breakers. High quality, CE certified, competitive price for industrial, commercial and residential projects.



Refrigerators, Freezers, Microwave ovens, Rice cookers, IH cooking heaters, Combined juicers and blenders, Electric pots, Coffee makers, Toasters, Dishwashers, Bread machines, Home raw garbage ...



Low-voltage Circuit Breakers Air Circuit Breakers (ACB) AE-SW Molded-Case Circuit Breakers (MCCB) NF Motor Protection Breakers NF Earth-Leakage Circuit Breakers (ELCB) NV Motor Protection ...

Contact Us

For more information, pricing, or custom solutions, please contact us:

Website: <https://indzawo.co.za>

Email: sales@indzawo.co.za

Phone: +27 71 296 8473

Address: 22 Quantum Street, Midrand, 1685, Gauteng, South Africa

This document is for informational purposes only. Specifications subject to change without notice.

