

Kenya Optical Backplane Connector Low Noise Manufacturer Direct Supply



Kenya Optical Backplane Connector Low Noise Manufacturer Direct



SENKO" Optical Backplane connector with AirMT™ technology offers excellent optical performance and stability. Blind mating technology connects up to 144 fibers using 24F MT ferrules.



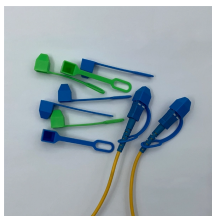
Our in-house technical team has decades of experience with high speed backplane design, layout, mechanical and thermal design, signal integrity, power distribution and advanced connector selection.



Open.Tech specializes in providing custom backplane assemblies with a focus on high-speed, high-density components that power them. Our expertise includes the design and manufacture of critical ...



Flexible stacking board to board connectors in a variety of orientations such as low profile, elevated, right-angle and pass-through, with a choice of pitch from 0.80 mm to 5.08 mm, to fit any application.



We design, build and test customised Backplane & Midplane solutions for most of the global leaders in IT Datacom and Telecoms technology systems. We have products performing to 56gb/s today in the ...



Delivering signal speeds up to 112Gbps, the Impulse Backplane Connector System provides a flexible, scalable and modular solution with cable, conventional and orthogonal board-to-board connectivity ...



Find your backplane connector easily amongst the 26 products from the leading brands (Smiths Interconnect, Hirose, VISHAY, ...) on DirectIndustry, the industry specialist for your professional ...



Whether the priority is a proven cost-optimized solution or the best performing backplane connector on the market, Amphenol is your source for ...



Our portfolio of backplane connectors features high-performance right angle, co-planar, and mezzanine interconnects, used for mating printed circuit boards together.



Whether the priority is a proven cost-optimized solution or the best performing backplane connector on the market, Amphenol is your source for reliable high-speed and high-density connectors.



A Backplane connector is a type of electrical connector used to connect and interconnect printed circuit boards (PCBs) within a computer or electronic system. It serves as a central hub or backbone for ...

Contact Us

For more information, pricing, or custom solutions, please contact us:

Website: <https://indzawo.co.za>

Email: sales@indzawo.co.za

Phone: +27 71 296 8473

Address: 22 Quantum Street, Midrand, 1685, Gauteng, South Africa

This document is for informational purposes only. Specifications subject to change without notice.

