

Laser Diode Driver Circuit LD- and LD



Laser Diode Driver Circuit LD- and LD



Step-by-step guide to setting up a laser diode driver circuit with detailed connections, component roles, and safety tips for stable operation and reliable performance



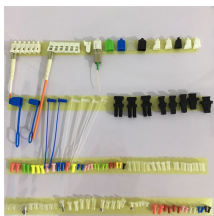
The most powerful laser designed to date can be found at the European Extreme Light Infrastructure facility in Romania. Its lasers are some of the most intense in the world, generating insanely brief ...



Laser, a device that stimulates atoms or molecules to emit light at particular wavelengths and amplifies that light, typically producing a very narrow beam of radiation. The emission generally ...



At same time, reference voltage V_2 is generated by zener diode and volume. OP2 always control the base current for output transistor so that it is always $V_1 = V_2$ and constant current flows into LD.



A laser is created when electrons in the atoms in optical materials like glass, crystal, or gas absorb the energy from an electrical current or a light. That extra energy "excites" the electrons enough to move ...



A laser is a device in which a collection of atoms or molecules, a semiconductor, or another quantum system, is held between mirrors and energized, or pumped, so that something in ...



In this article, we will show how to connect and build a simple laser diode circuit to get light output from a laser diode.



By understanding the key characteristics of laser diodes and the basic components of driver circuits, you can design and build your own laser diode driver tailored to your specific ...



Reserva tus vuelos con LASER Airlines. Líder en puntualidad y servicio en Venezuela. Conecta con los mejores destinos nacionales e internacionales con total confianza.



For the driving of the LASER diodes (LD) special drivers circuits are used. They can work in two ways : 1) produce constant regulated voltage; 2) produce constant current driven through the LD load.



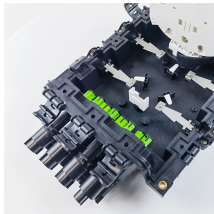
This short article provides basic information on laser diode drivers, and why they should be used to bias a laser diode instead of a standard DC supply. It provides a basic overview of how ...



A laser is not just light; it is light disciplined, sharpened, and focused into a beam so pure and precise that it can travel across the Moon, cut through steel, perform delicate eye surgery, or ...



An easy-to-understand explanation of how lasers work, with a simple diagram showing what's inside a laser.



We deliver the high quality laser engravers & cutters. From RF/CO2 laser engravers to desktop laser engravers, find your best laser engraving & cutting machines today.



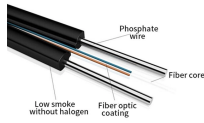
Laser diodes operate on the fundamental principle of stimulated emission within a semiconductor gain medium. Unlike conventional LEDs that rely on spontaneous emission, laser diodes require ...



This application note will introduce ROHM's LD line-up and show how to design the drive circuits of ROHM LDs. In addition, ROHM provides an evaluation board and a Spice model for evaluating LDs ...



Discover a wide range of laser products on Amazon. Browse pointers, levels, engravers, hair removal devices, and more for every need.



Here we design a LASER diode driver circuit with adjustable voltage regulator LM317 to drive red color 650nm 50mW laser diode. The function of the Laser diode driver is to provide a ...



In the LD Guide tab, we will walkthrough an overview of the major considerations and warnings involved with handling and operating laser diodes. Damage mechanisms are introduced and common ...

Contact Us

For more information, pricing, or custom solutions, please contact us:

Website: <https://indzawo.co.za>

Email: sales@indzawo.co.za

Phone: +27 71 296 8473

Address: 22 Quantum Street, Midrand, 1685, Gauteng, South Africa

This document is for informational purposes only. Specifications subject to change without notice.

