

## Laser diode three connectors



### Overview

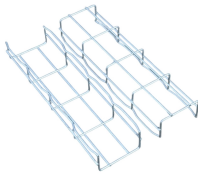
ROHM refers to the pins of a three-pin package as pins 1, 2 and 3, clockwise when viewed from the top of the package (the side where the laser beam is emitted). These laser diode sockets are ideal for OEM-type implementations and are compatible with our selection of Ø3.6 mm, Ø9 mm, and TO-5 laser diode packages. Pricing (USD) Filter the results in the table by unit price based on your quantity. A tariff of 8 % may be applied if shipping to the United States. Please refer to product description. Need more?

Buy 203-6970-50-0602J - 3M - IC & Component Socket, 3 Contacts, Laser Diode Socket. Newark Electronics offers fast quotes, same day dispatch, fast delivery, wide inventory, datasheets & technical support. The LDS-2 is a PC mount, three pin electrical socket that fits both 5. The maximum recommended current is 3 Amps. Specifications: Outside dimensions: Modern fiber-optic connectors use a protruding ferrule to secure and precisely align the fiber.

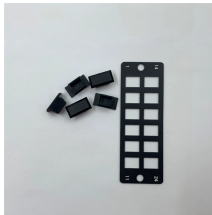
## Laser diode three connectors



The LDS-2 is a PC mount, three pin electrical socket that fits both 5.6mm and 9mm diameter base diodes. The socket accepts laser diodes with wire leads 24 to 26 gauge, 0.016 to 0.020 inches (0.41 ...



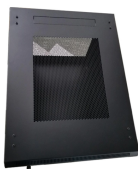
Usually the laser and photodiode are connected in either "common cathode" or "common anode" configuration, so that only 3 pins are needed for the two devices. How do I go about determining the ...



Buy 203-6970-50-0602J - 3M - IC & Component Socket, 3 Contacts, Laser Diode Socket. Newark Electronics offers fast quotes, same day dispatch, fast delivery, wide inventory, datasheets & ...



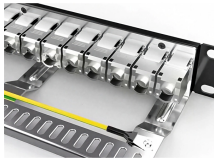
Mouser offers inventory, pricing, & datasheets for Laser Diode Socket 3 Position IC & Component Sockets.



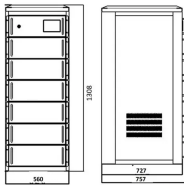
It has both a laser diode and a photodiode mounted internally. This kind of "raw" device requires special driver circuit to control the laser diode current so as not to destroy it.



Thorlabs offers a versatile range of accessories for convenient integration of laser diodes into functional systems. These laser diode sockets are ideal for OEM-type implementations and are compatible with ...



While many options exist, fiber-coupled laser diodes primarily use two designs: the FC (Ferrule Connector) and the SMA905 connector. SC and ST connectors are occasionally used but ...



The LDS-2 is a PC mount, three pin electrical socket that fits both 5.6mm and ...



Laser Diode Pinout The laser diode pinout is the guide for us to how to connect the diodes. It may be different according to the laser diode module number. You can see it the following drawing. The 1 is ...



Laser diodes (LD) are semiconductor devices that convert electrical energy into high-power optical energy. These devices are currently used in the fields of telecommunications and ...



Laser Diode Tripod Socket Connector Seat For 9.0mm TO-5 Three Pin Laser Diode \$31.74 + \$8.90 delivery

## Contact Us

For more information, pricing, or custom solutions, please contact us:

Website: <https://indzawo.co.za>

Email: [sales@indzawo.co.za](mailto:sales@indzawo.co.za)

Phone: +27 71 296 8473

Address: 22 Quantum Street, Midrand, 1685, Gauteng, South Africa

This document is for informational purposes only. Specifications subject to change without notice.

