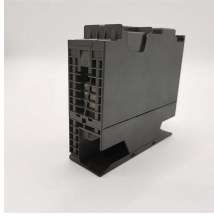


# Indzawo Optic Connect

## Lighthouse Cable Tray



## Lighthouse Cable Tray



Explore cable tray systems and accessories for organized, accessible cable routing in commercial and industrial environments.



Tripp Lite's wire mesh Cable Tray System accommodates copper network cables, A/V cables and lightweight cables/cable bundles to reduce cable clutter in data centers, server rooms and other IT ...



Our cable tray systems meet or exceed all the NEMA, UL, CTI, and CSA standards and are utilized in nearly every industry. All cable tray suppliers are not the same.



Choose from a wide array of cable tray products designed by MonoSystems, the leader in cable management equipment.



Cable trays and baskets are designed to help support and route cable bundles in an organized manner along ceilings or walls. Shop for cable tray systems now.



Constructed from high-quality galvanized iron, these trays provide excellent corrosion resistance while allowing for optimal airflow and heat dissipation. The perforated design not only facilitates easy ...



MP Husky's cable tray selector for choosing the correct tray type (ladder, solid bottom, perforated, wire mesh) and size based on load, cable type and installation requirements.



Our cable tray systems securely hold and protect cables and come in many models and sizes, solid bottom and ventilated.



From heavy power cable pathways on oil drilling platforms to data center cabling, explore the cable tray that's strong yet easy to install. Fast installation with dependable support.



Choose from our selection of cable trays, including over 850 products in a wide range of styles and sizes. Same and Next Day Delivery.

## Contact Us

For more information, pricing, or custom solutions, please contact us:

Website: <https://indzawo.co.za>

Email: [sales@indzawo.co.za](mailto:sales@indzawo.co.za)

Phone: +27 71 296 8473

Address: 22 Quantum Street, Midrand, 1685, Gauteng, South Africa

This document is for informational purposes only. Specifications subject to change without notice.

