

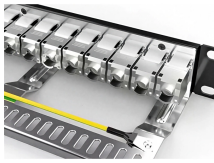
# **Lithuanian Computer Room Low Voltage Cable Tray Construction Case**



## Lithuanian Computer Room Low Voltage Cable Tray Construction Ca



Cable tray length is selected based on the load to be supported, the distance between the supports (also referred to as the span), and handling and installation constraints.



Types of Low-Voltage Cable Tray A low-voltage cable tray system is a crucial component in electrical infrastructure, designed to support and organize power, control, and signal cables operating at ...



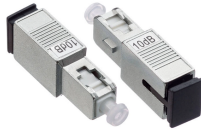
Our wind certification report provides you with list of acceptable B-Line series cable tray supports, fittings and covers based off of the environmental conditions, cable loading, and type of cable tray in your ...



Fig 2 shows an example of a steel wire cable tray/basket arrangement with a range of accessories available for site alterations to allow for installation in all manner of building types.



Fabricated in numerous styles (wiremesh, ladder, ventilated trough, channel, and solid-bottom) and sizes, cable tray provides the greatest versatility among cable support systems, while offering ...



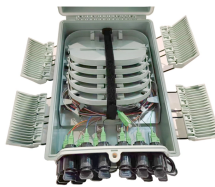
Hubbell's NEXTFRAME® Ladder Tray is the effective and widely used cable runway that supports and delivers bundles of cable between cabinets, racks, and closets, along walls, and suspended from ...



When fitting cable trays and their accessories, the products are cut on site to create changes of direction, adjust sections, etc. Damage can also occur during handling; as a result, both the ...



Example of a non-standard junction of cable trays, only in particular cases indicated in the cable trays manufacturing drawings, like Tokamak seismic isolation pit, or non-standard fittings.



The document discusses key considerations for designing low voltage substations, including: 1. Layouts, equipment placement, and clearances are important design aspects.



The cable management tray mounts discreetly under all Steelcase worksurfaces, fixed or height-adjustable. Use with Steelcase Powerstrip Plus to add convenient ...



Cable Support Systems are well designed to provide necessary support for cable trays, cable ladders and trunkings. Cable supports are manufactured according to common standards from high quality ...

## Contact Us

For more information, pricing, or custom solutions, please contact us:

Website: <https://indzawo.co.za>

Email: [sales@indzawo.co.za](mailto:sales@indzawo.co.za)

Phone: +27 71 296 8473

Address: 22 Quantum Street, Midrand, 1685, Gauteng, South Africa

This document is for informational purposes only. Specifications subject to change without notice.

