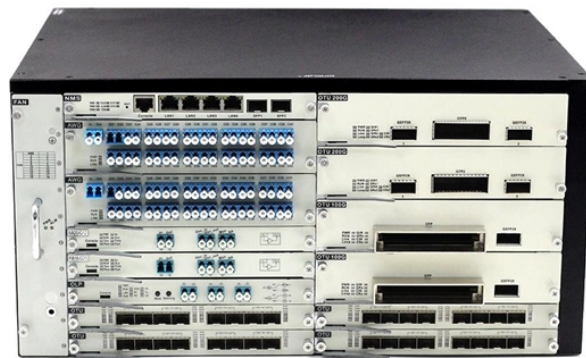


Lithuanian delivery time cold aisle flame retardant



Overview

Your order should arrive by this date if you buy today. To calculate an estimated delivery date you can count on, we look at things like the carrier's latest transit times, the seller's processing time and shipping history, and where the order is shipping to and from. Buyers are responsible for. Sometimes it is very important to know when the parcel will reach the consignee. Below you will find delivery terms in Lithuania by zones and delivery terms to the neighbouring Baltic countries and throughout Europe. Also note the time of placing the order (the time when you have to. Flame retardant fabric refers to textiles specially engineered or treated to self-extinguish quickly after exposure to fire, thereby drastically reducing fire spread risks. Unlike fire-resistant materials, which resist burning and maintain structure under high heat, flame retardant fabrics actively. Cold shipping package provided by FedEx Cold shipping package provided by FedEx can keep your temperature-sensitive shipments between 2°C and 8°C (35°F and 46°F) for 48 or 96 hours* without the weight, hassle and expense of using dry ice or gel packs. *Actual cooling duration varies, depending on. An aisle containment system is a simple way to improve cooling efficiency in hot aisle/cold aisle rack

configurations. Further, a 2007 study by.

Lithuanian delivery time cold aisle flame retardant



Cold shipping package provided by FedEx can keep your temperature-sensitive shipments between 2°C and 8°C (35°F and 46°F) for 48 or 96 hours* without the weight, hassle and expense of using dry ice ...



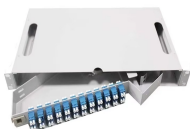
We deliver within 1-2 working days until 16:00. Calculated from the next working day after handing over the parcel to the courier.



Engineered for easy design and installation. The Subzero Engineering Strip Door is the low-cost option for closing the end of the aisle. This door is made of overlapping fire-resistant vinyl.



extension of the hot aisle/cold aisle concept of data center design. Hot aisle/cold aisle configuration is a best practice solution that separates hot and cold air streams. This method raises the temperature of ...



The benefit of IMPs is the short install time due to less trades being needed onsite. As a result, insulated metal panels can be installed in up to half the time of a traditional multi-part built-up system, saving ...



Learn how to efficiently purchase flame retardant fabrics with our step-by-step B2B guide. Understand fabric types, MOQ, lead times, cost components, international standards, supplier ...



A well-sealed cold aisle containment system not only offers a better thermal environment for the IT equipment but can also provide a longer ride-through time in case of cooling failure.



TRAX data center containment solution efficiently isolates cold or hot aisle to significantly increase cooling efficiency and reduce both energy usage and costly downtime which results in more profit for ...



The components are organized into modular kits and come with assembly hardware for easy step-by-step installation. Depending on your hot-aisle/cool-aisle needs, you can select from an assortment of ...



To calculate an estimated delivery date you can count on, we look at things like the carrier's latest transit times, the seller's processing time and shipping history, and where the order is ...

Contact Us

For more information, pricing, or custom solutions, please contact us:

Website: <https://indzawo.co.za>

Email: sales@indzawo.co.za

Phone: +27 71 296 8473

Address: 22 Quantum Street, Midrand, 1685, Gauteng, South Africa

This document is for informational purposes only. Specifications subject to change without notice.

