

## Location of cable tray fixing connection holes



## Location of cable tray fixing connection holes



Approval of IPR shall be obtained for site preparation and marking the cable tray routes and locations of cable tray support before proceeding with the erection and installation work.



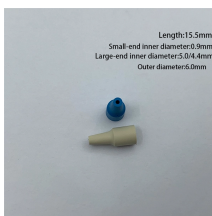
Cable ladders and cable trays should be mounted far enough off the floor or roof to allow the cables to exit through the bottom of the cable ladder or cable tray.



Learn how to install cable trays for large-scale projects with our professional, step-by-step guide covering industry standards, safety protocols, ...



Our wind certification report provides you with list of acceptable B-Line series cable tray supports, fittings and covers based off of the environmental conditions, cable loading, and type of cable tray in your ...



Some applications may require the cable tray to support the weight of a single, dead object in addition to the cable loads. Specifications typically require this to be applied at the midpoint of the span between ...



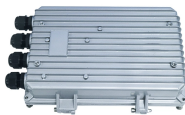
The number of drill holes is dependent on the height and width of the cable trays.  
Recommendation: For side height 60 mm = 4 screws per connector; for width 300 mm = 3 screws per joint plate.



Cable Tray Technical Guide A practical guide to product selection and installation This guide for engineers and installers has been developed by ABB as a practical reference regarding cable tray ...



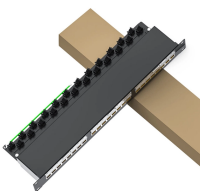
This document provides details on installing cable trays and their support systems. It includes diagrams showing how to mount cable trays on walls using pre-fabricated flanges or channels.



Learn common methods for connecting cable trays safely and efficiently. Our guide covers splice plates, quick-connects, and key tips for secure electrical cable management.



Learn how to install cable trays for large-scale projects with our professional, step-by-step guide covering industry standards, safety protocols, and efficient routing techniques.



Use the right cable tray conduit clamps and brackets for wall, ceiling, or floor support. Make sure supports are spaced properly, typically 1.5 to 3 meters apart, depending on tray type and load.



Make the holes and fix the cable tray supports with appropriate metal plugs, mounting brackets with base plates and nuts, "L" angles / slotted "C" channels and nuts.

## Contact Us

For more information, pricing, or custom solutions, please contact us:

Website: <https://indzawo.co.za>

Email: [sales@indzawo.co.za](mailto:sales@indzawo.co.za)

Phone: +27 71 296 8473

Address: 22 Quantum Street, Midrand, 1685, Gauteng, South Africa

This document is for informational purposes only. Specifications subject to change without notice.

