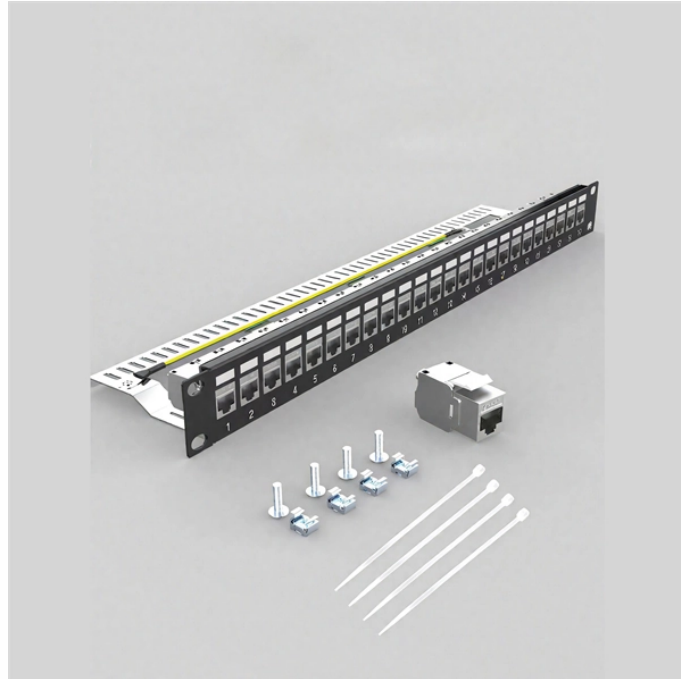


Loss due to fiber optic cable interruption



Overview

A fiber cut is a complete or partial severance of a fiber optic cable, resulting in an interruption or degradation of data transmission across the network. This damage immediately blocks the transmission of data, voice, and video, leading to a loss of connectivity or severe service degradation for. Even small forms of damage—from a bent cable to a rodent bite—can disrupt signals, cause costly outages, and require expensive repairs. 9%, indicating outages are extremely uncommon?

Fiber service is recognized for its outstanding reliability, but even this highly dependable system is not entirely free from interruptions. When issues like signal loss, slow speeds, or intermittent connectivity arise, systematic troubleshooting is key. This guide will walk you through diagnosing and resolving common.

Loss due to fiber optic cable interruption



What Is a Fiber Cut? A Deep Dive into Network Disruptions A fiber cut is a complete or partial severance of a fiber optic cable, resulting in an interruption or degradation of data ...



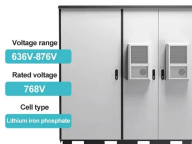
The pain of loss and grieving can feel overwhelming, but there are healthy ways to cope with your grief and learn to heal. These tips can help.



LOSS definition: 1. the fact that you no longer have something or have less of something: 2. a disadvantage caused.... Learn more.



There was a gain of five yards on first down, but a loss of three yards on second down.



Learn about fiber optic signal loss, its causes, measurement techniques, and strategies to reduce attenuation for high-speed, reliable network performance.



A loss is the disadvantage you suffer when a valuable and useful person or thing leaves or is taken away.



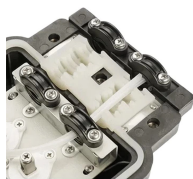
Learn how fragile fiber infrastructure fails, the technology used to pinpoint the break, and the complex engineering process required to restore connectivity.



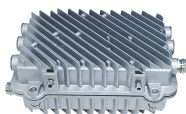
This guide explores the most common causes of fiber-optic cable damage, explains the technical impact of each risk, and provides actionable strategies to protect your fiber infrastructure.



Learn how to accurately calculate fiber optic loss to ensure optimal network performance. Explore types of loss, industry standards, and step-by-step methods for assessing link loss and power budget.



The business is operating at a loss. [=the business is spending more money than it is earning] They sold the property at a (considerable) loss. [=for less than they paid for it]



Presented as a four-panel comic with no dialogue, the strip shows Ethan entering a hospital where he sees Lilah weeping in a hospital bed after suffering a miscarriage. Buckley cited events in his life as ...



Finding a break in a fiber optic cable can be challenging but is essential for maintaining a stable network. Here's a guide to identifying the location of a break in a fiber optic cable, including ...



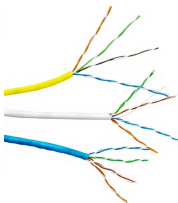
When the selling price and cost price are known, the basic formula for calculating the loss is: $\text{Loss} = \text{Cost price (C.P.)} - \text{Selling price (S.P.)}$ Where, C.P. = the actual price of the product. S.P. = the price ...



Discover 7 frequent fibre optic cable problems that require expert repairs to ensure optimal network performance and prevent costly downtime.



Power Budgets And Loss Budgets The terms "power budget" and "loss budget" are often confused. The power budget refers to the amount of fiber optic cable plant loss that a datalink (transmitter to ...



Learn how to troubleshoot fiber networks. Identify common issues like high loss, dirty connectors, and signal drops, with practical solutions for optical links.



Learn why internet outages may still happen with fiber, how unlikely they are and what elements can disrupt your connection.



LOSS definition: detriment, disadvantage, or deprivation from failure to keep, have, or get. See examples of loss used in a sentence.

Contact Us

For more information, pricing, or custom solutions, please contact us:

Website: <https://indzawo.co.za>

Email: sales@indzawo.co.za

Phone: +27 71 296 8473

Address: 22 Quantum Street, Midrand, 1685, Gauteng, South Africa

This document is for informational purposes only. Specifications subject to change without notice.

