

# **Main Distribution Box Dual Power Supply Box**



## Main Distribution Box Dual Power Supply Box



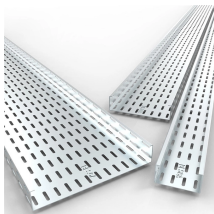
The ATS Type Dual Power Distribution Box is designed to provide seamless and automatic switching between primary and backup power sources, ensuring ...



Browse power distribution boxes with circuit breaker protection and multiple outlet configurations. Shop durable solutions for construction and emergency use.



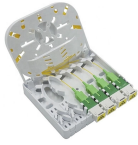
China Dual power distribution box catalog of AC380/400V Dual Power Automatic Conversion Distribution Box for 100A 160A 250A 400A 630A Generator/Mains Power, 4-Pole Dual Power ...



The Main Distribution Box (MDB) is the heart of the Global IFS Cable System Modular Wiring System. It provides power to the Floor Electric Modules and/or Secondary Power Distribution Boxes via Double ...



Aokai UL 1008-certified dual power supply boxes deliver seamless 0.2s power transfer between mains & generators, ensuring 24/7 uptime for hospitals, data centers, and industrial facilities.



The ATS Type Dual Power Distribution Box is designed to provide seamless and automatic switching between primary and backup power sources, ensuring continuous power supply for critical systems.



Its size and high level of flexibility make the REDline Power Box Twin the ideal main power distributor for vehicle electrics. Individual adaptations are possible.



One pivotal solution that enhances this reliability is the Dual Power Supply Box. This innovative device is designed to ensure consistent power delivery, and it's gaining popularity across ...



One of the main advantages of dual power supply boxes is their ability to enhance system performance. With two supplies, users can distribute the load between them, potentially doubling the ...



When it comes to powering multiple devices efficiently, a dual power supply box can be a game changer. However, many customers face challenges when selecting the right one. This guide ...



This device simultaneously connects a primary energy supply and a secondary energy supply. When the main power goes out, the system backup switches on in order to eliminate any ...

## Contact Us

For more information, pricing, or custom solutions, please contact us:

Website: <https://indzawo.co.za>

Email: [sales@indzawo.co.za](mailto:sales@indzawo.co.za)

Phone: +27 71 296 8473

Address: 22 Quantum Street, Midrand, 1685, Gauteng, South Africa

This document is for informational purposes only. Specifications subject to change without notice.

