

Mali Fiber Optic Cable Splice Box 48-core vs Copper Cable vs Fiber Optic Cable



Mali Fiber Optic Cable Splice Box 48-core vs Copper Cable vs Fiber C



The Optical Splice Closure is an essential component for fiber optic networks, offering exceptional performance, durability, and adaptability. Its IP68-rated protection, efficient fiber management, and ...



One key factor is the number of cores, which impacts how much data you can transmit. This post will guide you through understanding fiber optic cores and selecting the perfect cable for...



What factors should be considered when selecting a fiber optic splice box? Consider the type of fibers, environmental conditions (indoor vs. outdoor), capacity requirements for current and future needs, ...



Fiber optic cable is a cable containing one or multiple optical fibers that are used to transmit the signal. The optical fiber elements are typically individually coated with layers and contained in a protective ...



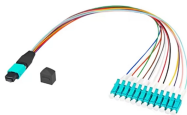
We can use these two sets of data to narrow down the total list of possible cable and closure combinations. Once you have a smaller subset, you can then look at the details which are specific to ...



When planning your fiber optic network, various factors must be evaluated to ensure optimal performance and scalability. The following sections will delve into how to select the suitable ...



The horizontal fiber splice enclosure is designed to protect single-mode or multimode fiber optic cable connectors and the spliced cable between them in a clean area ...



The 48-Core Fiber Terminal Box is a versatile, high-capacity ...



The 48 core dome fiber splice closure is a compact and durable outdoor splice enclosure designed for fiber optic splicing, protection, and distribution in FTTH and OSP networks.



There are several things to consider when choosing the right fiber closure for your network: aerial vs. buried, in-line vs. butt, number of port counts, and minimum ...



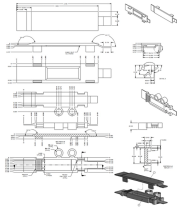
The 48-Core Fiber Terminal Box is a versatile, high-capacity solution for FTTx applications, offering secure splicing, distribution, and durable protection.



The 48 Cores FTTH Fiber optic floor splice box is designed for providing full splice and perfect fiber management. With the 8 drop cable ports on bottom and 8 drop cable ports on top, the fiber floor ...



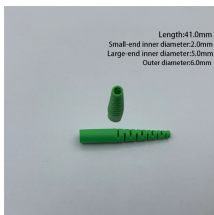
The FDB-48 is suitable for indoor or outdoor FTTH applications that support up to 48 subscribers. It has a durable wall-mountable housing with a weatherproof gasket and weatherproof PG gland entry/exit ...



The proper length of fiber is needed to allow splicing and then neatly storing fiber in the splice tray. Inside splice closures and at each end, cables with metallic ...



What factors should be considered when selecting a fiber optic splice box? Consider the type of fibers, environmental conditions (indoor vs. outdoor), capacity ...



In summary, the FIMP-XLE splice box offers a compact, robust, and versatile solution for industrial fiber optic connectivity, supporting various configurations and fiber types to meet diverse networking needs.

Contact Us

For more information, pricing, or custom solutions, please contact us:

Website: <https://indzawo.co.za>

Email: sales@indzawo.co.za

Phone: +27 71 296 8473

Address: 22 Quantum Street, Midrand, 1685, Gauteng, South Africa

This document is for informational purposes only. Specifications subject to change without notice.

