

## Mauritania Network Rack Parameter Settings



### Overview

This guide covers every aspect—from a comprehensive introduction and detailed technical parameters (with specific numbers for plate thickness, width, and more), to the common types of racks and their pros, cons, and applications. An APC Network Management Card must be configured with network settings before it can communicate on the network. Wi-Fi 7 Access Points often require 10Gbps backhaul, and many switches are 16-20" deep, making shallow wall-mount cabinets obsolete. At iFeeltech, we've evolved our installation. You can install the switch in the following types of cabinets and racks, assuming an external ambient air temperature range of 0 to 104°F (0 to 40°C): If you are selecting an enclosed cabinet, we recommend one of the thermally validated types, either standard perforated or solid-walled with a fan. There are 4 tiers of certification (I-Basic, II-Redundant Capacity, III-Concurrently Maintainable, and IV-Fault Tolerant). Uptime's facility certification is divided into three phases: design, facility, and operations. Clients often express the desire to get a Tier IV certification, but then back. Server racks play a crucial role in modern IT infrastructures, acting as the physical support for critical servers and networking equipment.

## Mauritania Network Rack Parameter Settings



Table 2 provides a reference for network cable design weights based on the width/height of the cable-tray and cable type (Cat 5e vs. FO). Several tables are provided in this article to assist ...



In this guide, we'll show you the essential steps and considerations for setting up a server rack, ensuring you build an infrastructure that's organized, secure, scalable, and future-proof.



The minimum vertical rack space per chassis must be two rack units (RUs), equal to 3.5 inches (8.8 cm) . The distance between the chassis air vents and any walls should be 2.5 inches (6.4 cm).



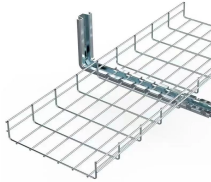
Technical Specifications of Network RACK Panel  
Sr.No Parameters Technical Specifications Offered by bidder Technical Specifications of Network RACK Panel



Explore our in-depth guide to network server racks—from essential parameters and specific measurements to common types, materials, and key factors to consider when choosing an OEM ...



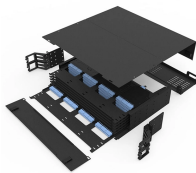
Learn network & server rack setup best practices. Get tips for how to setup a server or network rack, how to layout your equipment, & enhance your configuration.



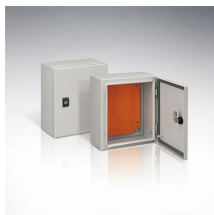
Plan for 30% extra U-space and verify rack depth (20"+ for PoE++ switches). Account for thermal ventilation and Wi-Fi 7 cooling requirements. Use Cat6A for all Wi-Fi 7 APs, PoE++ devices, ...



This section offers recommendations for setting up network devices and servers post-installation, as well as an overview of software options for monitoring and managing the data rack.



Plan for 30% extra U-space and verify rack depth (20"+ for PoE++ switches). Account for thermal ventilation and Wi-Fi 7 cooling requirements. Use ...



An APC Network Management Card must be configured with network settings before it can communicate on the network. Once the cards have been configured with an IP address, Subnet ...



To set a rack parameter, use the following command: Setting parameters... OK. This command sets the specified parameter to the given value. Select your cloud provider to view the available parameters ...

## Contact Us

For more information, pricing, or custom solutions, please contact us:

Website: <https://indzawo.co.za>

Email: [sales@indzawo.co.za](mailto:sales@indzawo.co.za)

Phone: +27 71 296 8473

Address: 22 Quantum Street, Midrand, 1685, Gauteng, South Africa

This document is for informational purposes only. Specifications subject to change without notice.

