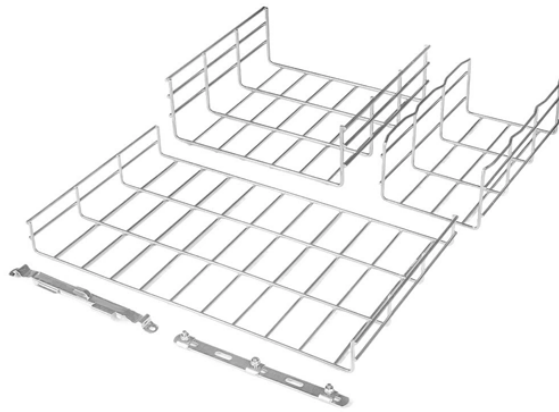


Metal sheet metal distribution box material specifications



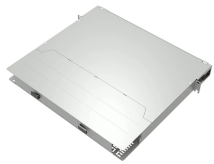
Metal sheet metal distribution box material specifications



Material: Sheet steel. 2. Paint finish: Both externally and internally. 3. Protected with epoxy polyester coating. 4. Textured finish RAL7032 or RAL7035. 5. Mounting plate: Powder coated similar to ...



Submit specs for a tailored quote - no MOQ limits, 24/7 engineering assistance. As a leading OEM Sheet Metal Distribution Box manufacturer, we specialize in custom industrial electrical ...



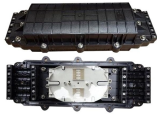
Made out of high quality steel sheet. Matt-finish polyester powder coated paint. Knockouts provided on the top and bottom of the enclosure. Suitable for rated voltage 230/415V. Flush and surface mounted ...



Material Advantages: Made of cold-rolled steel, possessing high hardness and strength, effectively protecting internal precision electrical components. Impact Resistance: Able to withstand external ...



alfanar Metal Enclosures are designed to accommodate various types of switchgear and controlgear assemblies to suit a variety of electrical installations in commercial and industrial premises. Our ...



Supplied with a special lock, metal plate for fixing of electrical devices, lid for the input-output conductors, grounded dowel pin, gaskets, etc. Option to change the opening direction.



With 20 years'' experience in electrical industry, is the leading manufacturers of distribution boxes in China, specialized in producing and reserching all kinds of distribution box, wall mounting distribution ...



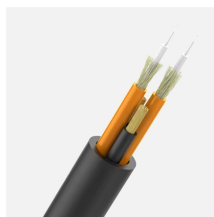
This guide explores BSD Machining''s product capabilities, technical specifications, and how to overcome challenges when sourcing Metal Distribution Boxes from China.



Material: High-strength Q195 cold-rolled steel plate, providing excellent rigidity and minimizing deformation under load or during cable overheating. Protection Degree: IP30, suitable for indoor ...



Matterial: Sheet steel. 2. Paint finish: Both externally and internally. 3. Protected ...



This guide outlines five of the most suitable materials used for sheet metal enclosures and custom sheet metal enclosures, highlighting key characteristics and ideal applications.

Contact Us

For more information, pricing, or custom solutions, please contact us:

Website: <https://indzawo.co.za>

Email: sales@indzawo.co.za

Phone: +27 71 296 8473

Address: 22 Quantum Street, Midrand, 1685, Gauteng, South Africa

This document is for informational purposes only. Specifications subject to change without notice.

