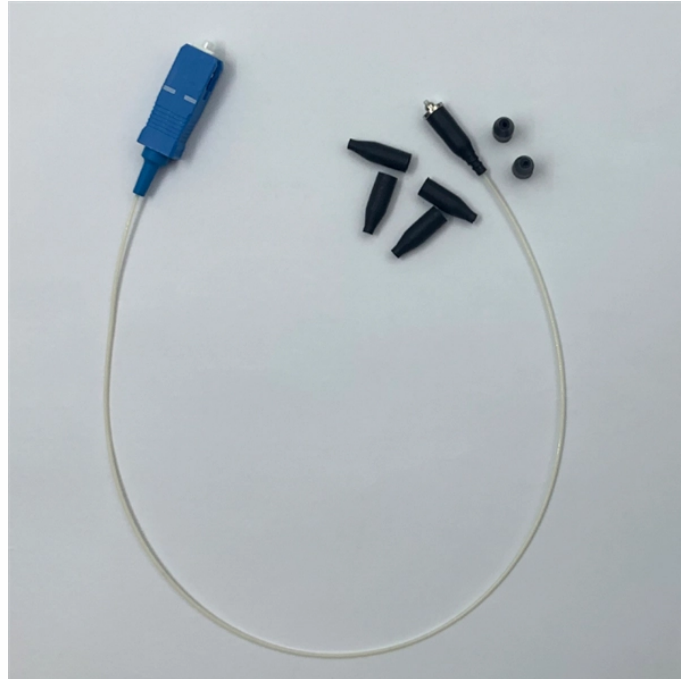


Method for representing cable tray elevation



Overview

The Insert Top and Bottom Elevation Label command is used to insert an elevation label on a conduit or cable tray that displays the elevation of the top and the bottom of the conduit or cable tray. You will. All rights, including translation into other languages, reserved under the Universal Copyright Convention, the Berne Convention for the Protection of Literary and Artistic Works, and the International and Pan American copyright conventions. So according to my original scripts a 150 mm wide tray had a CoP position somewhere in space and 75 mm below that was the BoP and 75 mm above that was the ToP. Separation of Electrical and Instrumentation Cables Electrical on Top, Instrumentation Below: Typically, electrical trays are positioned above instrumentation trays. 0 This method statement will serve as a minimum guideline to carry out the Cable Tray Installation activities for commercial buildings, plants and refineries in accordance with Project Drawings and Specifications.

Method for representing cable tray elevation



The purpose of this paper is to provide a guideline to all staff involved in cabling engineering, in order to obtain high E.M.C. performance and to ensure the safe operation of the facility. Any electrical ...



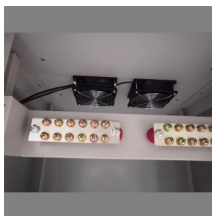
This publication is intended as a practical guide for the proper and safe* installation of cable ladder systems, cable tray systems, channel support systems and associated supports.



Show fabrication and installation details of cable tray, including plans, elevations, and sections of components and attachments to other construction elements.



The Insert Top and Bottom Elevation Label command is used to insert an elevation label on a conduit or cable tray that displays the elevation of the top and the bottom of the conduit or cable tray. You will ...



Starting Elevation: The starting elevation of the cable tray. The reference point for the starting elevation of the cable tray is set by the Vertical Alignment . Visit the Elevation section for more information. ...



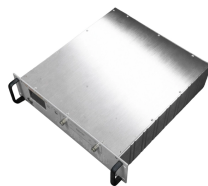
To install the cable tray supports, first find the required elevation from the floor to the bottom of the cable tray and establish a level line with a laser or a nylon string.



Below are the key principles to guide the layout of E& I cable trays, focusing on practical, safety, and efficiency aspects. 1. Separation of Electrical and Instrumentation Cables. Electrical on Top, ...



Generating the correct elevation of cable trays for the ortho drawings in Plant3D can be tricky. But a very simple solution is here!



This document provides construction details for a wire mesh cable tray, including dimensions and material specifications. An elevation view and plan view show the ...



Learn to design cable tray layouts with TrayCAD for AutoCAD. User manual covers component configuration, BOM creation, and troubleshooting.



1.0 This method statement will serve as a minimum guideline to carry out the Cable Tray Installation activities for commercial buildings, plants and refineries in accordance with Project Drawings and ...



Discover expert tips for Electrical Draftsmen to design effective cable tray layouts in industrial facilities.



Learn about effective Cable Tray Design and Layout for electrical systems. Our guide covers planning, material choice, safety, and maintenance.

Contact Us

For more information, pricing, or custom solutions, please contact us:

Website: <https://indzawo.co.za>

Email: sales@indzawo.co.za

Phone: +27 71 296 8473

Address: 22 Quantum Street, Midrand, 1685, Gauteng, South Africa

This document is for informational purposes only. Specifications subject to change without notice.

