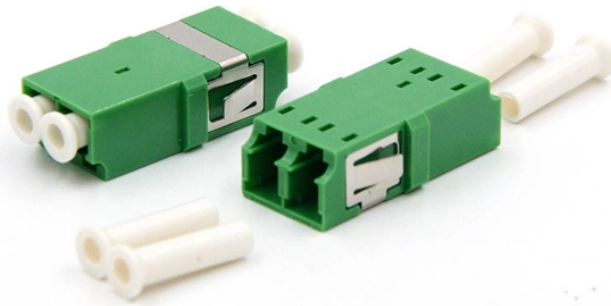


Methods for Multiplexing Fiber Optic Splitters



Methods for Multiplexing Fiber Optic Splitters



Learn about optical splitter split ratios (1:N, 2:N), centralized vs. cascaded architectures, and how to choose the right setup for FTTH PON networks.



Thorlabs offers a varied selection of single mode (SM), polarization-maintaining (PM), multimode (MM), and double-clad fiber couplers, as well as 1x8 and 1x16 SM PLC splitters; 1x4, 1x8, and 1x16 PM ...



These various methods can be mixed in a network to best meet the performance and cost requirements for the network. The next document to be published on this topic will be a more comprehensive look ...



OZ Optics can also build source to fiber couplers with built-in beamsplitters for either laser or laser diode sources. Contact AMS Technologies for details. If size is a concern, we recommend that you ...



Transparent to incoming data, it effectively doubles existing fiber optic cable capacity by multiplexing two separate channels over one single mode fiber. Dual two-channel units are also available. The ...



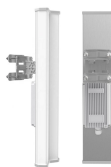
DWDM Products DWDM Technology (dense wavelength division multiplexing) can combine multiple optical wavelengths and transmit them with one optical fiber. This is a laser technology used to ...



Fiber Optic Hardware Corning has a wide variety of hardware solutions to choose from to fit your cabling needs. Choose from racks, panels, modules, splice trays, ethernet fiber switches and other ...



The common types of fiber optic splitters include the planar waveguide splitter, tree-like splitter, star coupler, and Wavelength Division Multiplexing (WDM) splitter.




The common types of fiber optic splitters include the planar waveguide splitter, tree-like splitter, star coupler, and Wavelength Division Multiplexing (WDM) splitter.



Learn how to choose the right fiber optic splitter for FTTH and FTTX deployments. Compare PLC splitter ratios, packaging types, and installation options.



In this guide, you'll learn how fiber splitters function in PON networks, the difference between PLC and FBT types, and how to choose the best model for your rollout in 2025.

 <p>Pre-Terminated Patch Panel</p> <p>Standard 19" Patch Panel Patch 144 Ports in 1U Patch Panel with Dual Port</p>	<p>Clearfield leads the way with optical component technologies for PON splitting, C/W division multiplexing and optical circulators. These products are custom built to your unique split ratios, light requirements ...</p>
--	---

Contact Us

For more information, pricing, or custom solutions, please contact us:

Website: <https://indzawo.co.za>

Email: sales@indzawo.co.za

Phone: +27 71 296 8473

Address: 22 Quantum Street, Midrand, 1685, Gauteng, South Africa

This document is for informational purposes only. Specifications subject to change without notice.

