

## Mobile fiber optic router MTU value



### Overview

This value represents the maximum packet size that your router is currently configured to handle. Note down this value for reference. Step 5: Adjust the MTU Value To change the MTU value, simply click on the field where the current value is displayed and replace it. What is the optimal value for the MTU on the router?

There is no single value that is optimal for the MTU on the router, as it may vary depending on your internet provider and your network configuration. This is Ethernet in my case and its value is 1500 (see below screenshot). If its not set properly you can run into packet fragmentation which leads to higher ping and slower speeds (or complete transmission failure). more You. MTU is mostly based on your ISP and different other reasons, so it's not a general fix for everything. WWAN. and see the link I'd posted I'm no MTU expert but the 1320 may be somewhat specific to xfinitywifi. I have a Creta that uses xfinitywifi and needed to use 1320 to get it to connect to my. Best MTU Setting?

I have a 1GBPS down/350 MBPS up fibre connection.

## Mobile fiber optic router MTU value



Easy app to find the right MTU value for T-Mobile, and how to change it in Windows or using a spare router If you're experiencing issues with your internet (speed, latency, lag, trouble loading content, ...



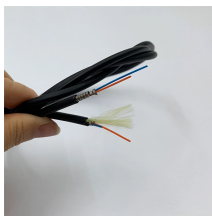
There is no single value that is optimal for the MTU on the router, as it may vary depending on your internet provider and your network configuration. However, the most commonly ...



How to optimize the MTU setting on your router for better performance Depending on make and model, your home router/modem may be configured for basic web surfing but not for high ...



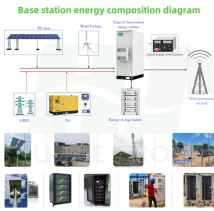
The MTU in the WG app on the Android phone was previously blank (showing a greyscale "Auto") and the data speeds were terrible. Once I manually entered 1380 the speeds improved ...



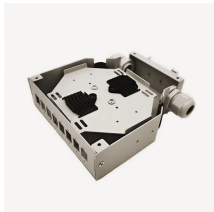
To determine MTU, Cradlepoint recommends using the methods below on the user's equipment. This allows adjustment of the MTU and MSS on the network device to avoid fragmentation.



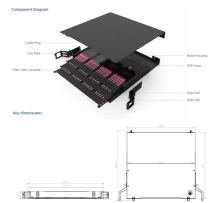
To find the correct MTU for your configuration you must run a simple D O S P i n g test. You will simply send out ping requests and progressively lower your packet size until the packet no longer needs to ...



In this tutorial, you'll learn how to configure your router's MTU (Maximum Transmission Unit). The MTU is the maximum packet size that can be transmitted over the network. Setting the correct MTU can ...



Different network media types used by your ISP have different MTU values, but as most providers are using fiber internally (except for the "last mile" to your house if you're not Verizon or ...



You can quickly find out your optimal MTU packet size by following along and then setting your router or computer to that size.



MTU settings determine the maximum size of data packets that can be transmitted over your network, and adjusting them can help improve network stability and speed. In this guide, we'll walk you ...

## Contact Us

For more information, pricing, or custom solutions, please contact us:

Website: <https://indzawo.co.za>

Email: [sales@indzawo.co.za](mailto:sales@indzawo.co.za)

Phone: +27 71 296 8473

Address: 22 Quantum Street, Midrand, 1685, Gauteng, South Africa

This document is for informational purposes only. Specifications subject to change without notice.

