

Moxa Industrial Switch 12-Port



Moxa Industrial Switch 12-Port



MOXA EDS-G512E-8PoE-4GSFP-T 12-Port Full Gigabit Managed Ethernet ...



The EDS-G512E Series is equipped with 12 Gigabit Ethernet ports and up to 4 fiber-optic ports, making it ideal for upgrading an existing network to Gigabit speed or building a new full Gigabit backbone.



The Moxa EDS-G512E 12-Port Managed Ethernet / PoE Switch is built out with an interface that includes twelve Gigabit Ethernet ports, with up to 4 for fiber-optic connections.



The compact DIN-rail managed switches have a variety of copper and fiber port combinations that provide customers with greater flexibility when deploying networks



Introduction The EDS-4012 Series is a range of 12-port managed Fast Ethernet switches with the option for four 1 Gbps fiber-optic uplink ports. This Series also offers models with four 10/100BaseT (X) ...



It can provide up to 30 watts of power per PoE+ port in standard mode and allow high power output of up to 36 watts for industrial heavy-duty PoE devices, such as weather-proof IP surveillance cameras ...



MOXA EDS-G512E-8PoE-4GSFP-T 12-Port Full Gigabit Managed Ethernet Switch, 8 10/100/1000BaseT PoE/PoE+ Ports, 4 100/1000BaseSFP Slots, -40 to 75°C Operating Temp.



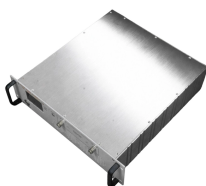
The compact DIN-rail managed switches have a variety of copper and fiber port combinations that provide customers with greater flexibility when deploying networks



EDS-4012 series managed DIN-Rail mount industrial Ethernet switches manufactured by Moxa.



Moxa EDS-G512E Series features 12 Gigabit Ethernet ports and up to 4 fiber-optic ports, making it ideal for upgrading an existing network to Gigabit speed or building a new full Gigabit backbone.



With four combo uplinks and wide-temperature operation, the EDS-4012-4GC-LV-T fits diverse field upgrades. Select copper or SFP per uplink, keep eight 10/100 access ports for local devices, and rely ...

Contact Us

For more information, pricing, or custom solutions, please contact us:

Website: <https://indzawo.co.za>

Email: sales@indzawo.co.za

Phone: +27 71 296 8473

Address: 22 Quantum Street, Midrand, 1685, Gauteng, South Africa

This document is for informational purposes only. Specifications subject to change without notice.

