

Multiple vertical cable tray fixing brackets



Multiple vertical cable tray fixing brackets



As the leading cable tray manufacturers and suppliers, JLH Electric offers a wide range of accessories and spare items, including tray supports and tray connections. We can provide custom design and ...



These special heavy duty tray hold down cable tray clamps and expansion guides are ideal for fastening tray to C-Channels and beams, such as those found on bridges.



When fitting cable trays and their accessories, the products are cut on site to create changes of direction, adjust sections, etc. Damage can also occur during handling; as a result, both the ...



These fittings are used in conjunction with cable trays to support cables in ventilation holes, assist with directional change of piping systems, and aid cable channelling around obstacles.



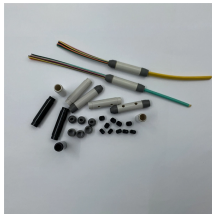
These cable tray straight sections are made from high-quality zinc plated steel with a chrome finish. Designed with electro-zinc resistance, these cable trays are protected from weather and chemical ...



Choose from our selection of cable tray mounting brackets in a wide range of styles and sizes. Same and Next Day Delivery.



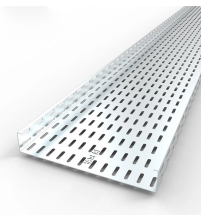
Designed for perpendicular mounting to channel or box structures, vertical brackets support cable trays in upright configurations. Mounted perpendicular to the main tray assembly, these brackets provide ...



Our Snap Track single hanger brackets & channel hangers are used for overhead or beam mounting when installed with a beam clamp. Contact us!



Cable tray length is selected based on the load to be supported, the distance between the supports (also referred to as the span), and handling and installation constraints.



Discover cable tray supports at TechLine Mfg. Choose from hangers, brackets, and clamps for your needs. Contact us today for custom or standard-sized brackets!



These cable tray straight sections are made from high-quality zinc plated steel with a chrome finish. Designed with electro-zinc resistance, these cable trays are ...



Cable Runway Wall Angle Support fastens ladder rack to a wall or other flat surface. This Wall Angle Support, LWASK24BLK item fits 24.00 with a material of Steel color Black.



Brackets made for the electrician. Key features: Lightweight and versatile design. Can be fixed to strut or directly to wall. Can be used for retrofit to studding. Boxed in ...



Hubbell's NEXTFRAME® Ladder Tray is the effective and widely used cable runway that supports and delivers bundles of cable between cabinets, racks, and closets, along walls, and suspended from ...

Contact Us

For more information, pricing, or custom solutions, please contact us:

Website: <https://indzawo.co.za>

Email: sales@indzawo.co.za

Phone: +27 71 296 8473

Address: 22 Quantum Street, Midrand, 1685, Gauteng, South Africa

This document is for informational purposes only. Specifications subject to change without notice.

