

Multiple wires in the distribution box



Multiple wires in the distribution box



Master the safest and most efficient circuit breaker wiring configurations. Learn about single-phase vs. three-phase setups, safety standards, and future-proof electrical ...



Double lugging, on the other hand, involves placing multiple wires under a single lug in a panel, such as at the neutral or ground bar. These practices may seem minor but can compromise ...



Ideally, wire groups are installed in layers and wires are bent at right angles to buses or breakers. Label short sheathing sections (slugs) to indicate which circuits wires serve.



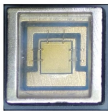
Choose the right size and setup for multiple circuit breakers in your distribution box to ensure safety, code compliance, and room for future upgrades.



Soldering Multiple Wires for a Distribution Joint: Sometimes it's necessary to split power/signal from a single wire to multiple outputs. Normally I'd prefer to use a terminal/distribution block for something ...



Understanding its significance, this article covers what a distribution box is, how it functions, its structure, the various types available, and how it differs from other electrical boxes like ...



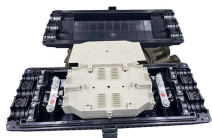
Find the right wire and cable types for wiring distribution panels at IEWC . Find information on compliance, cable specs, installation tips, and more.



Master the safest and most efficient circuit breaker wiring configurations. Learn about single-phase vs. three-phase setups, safety standards, and future-proof electrical planning.



Unlike single-phase systems, where power is distributed using two wires (one live and one neutral), 3 phase DB box wiring involves three live wires and a neutral wire. This allows for a more balanced ...



Having two wires or circuits, as shown in Figure 2, on a single breaker generally occurs because the home has required additional receptacles or lighting. The most convenient method of correcting the ...



Inside a distribution box are components like circuit breakers, earth leakage units, doorbells, and timers. The building's electrical power enters through the main feeding cable, which ...

Contact Us

For more information, pricing, or custom solutions, please contact us:

Website: <https://indzawo.co.za>

Email: sales@indzawo.co.za

Phone: +27 71 296 8473

Address: 22 Quantum Street, Midrand, 1685, Gauteng, South Africa

This document is for informational purposes only. Specifications subject to change without notice.

