

Nan Ya Cold Galvanized Cable Tray Processing



Nan Ya Cold Galvanized Cable Tray Processing



In summary, using cable trays is one of the most cost-effective solutions for managing cabling in commercial or industrial settings due to their long lifespan and minimal maintenance requirements ...



Witness the precision and durability of our Hot-Dip Galvanized (HDG) cable tray production process in action. This advanced procedure ensures each tray is un...



When fitting cable trays and their accessories, the products are cut on site to create changes of direction, adjust sections, etc. Damage can also occur during handling; as a result, both the ...



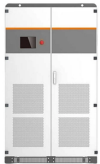
Cable tray length is selected based on the load to be supported, the distance between the supports (also referred to as the span), and handling and installation constraints.



The process involves several steps, including surface preparation, zinc alloy formation, and cooling.



Made from steel coated with a layer of zinc, these trays offer superior corrosion resistance and durability. They come in various structural designs tailored to different installation needs, ventilation ...



The document provides a technical data sheet for cable trays including ladder and perforated types. It lists specifications for material, thickness, dimensions, loading capacity, fittings and accessories.



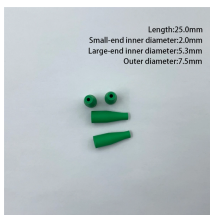
Heavy duty cable trays and cable ladders are manufactured from pre-galvanized, electro-galvanized, or hot-dipped galvanized sheet metal, designed to meet ideal environmental working conditions for ...



At Tanya Galvanizers, we help the manufacturers to undergo a proper galvanization that is the initial stage of the work. From understanding the type of cable tray they are installing to ...



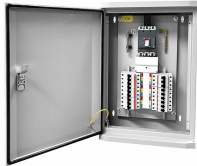
Jiangsu Holdee Electric Co., Ltd. is a professional manufacturer of cable trays, with its own hot-dip galvanizing surface treatment plant of which in Jiangsu Province.



Refers to the approximate height of a cable tray used for specifying. Selecting a specific height will show cable trays with that height, as well as cable tray accessories compatible with that height.



The document provides a technical data sheet for cable trays including ladder and ...



Snake Tray has been designing and manufacturing cable trays (cable management systems), power distribution and enclosures since 1996! Our goal is to provide our customers with cost-effective ...



Explore our range of high-quality nan ya galvanized molded cable trays, and ensure you're ready for your next adventure!

Contact Us

For more information, pricing, or custom solutions, please contact us:

Website: <https://indzawo.co.za>

Email: sales@indzawo.co.za

Phone: +27 71 296 8473

Address: 22 Quantum Street, Midrand, 1685, Gauteng, South Africa

This document is for informational purposes only. Specifications subject to change without notice.

