

## National Standard Requirements for Cable Tray Angle Iron



### Overview

This is the harmonized CSA Group and NEMA standard for Metal Cable Tray Systems. It is the fourth edition of CSA C22. 1, superseding the previous editions published in 2009, 2002, and 1998, and the sixth edition of NEMA VE 1, superseding the previous edition. Provides technical requirements concerning the construction, testing, and performance of metal cable tray systems. Addresses shipping. 47 Literary and Artistic Works, and the International and Pan American Copyright Conventions. Consensus does not 52 of this document. All illustrations, descriptions and technical information included in this document are provided as indications and can cable trays are equivalent. It covers aspects including shipping, handling, storage, and installation procedures, as well as.

## National Standard Requirements for Cable Tray Angle Iron



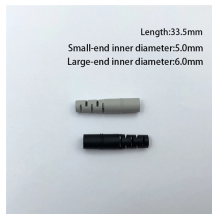
Cable tray support locations are defined by the NEMA VE-1 and VE-2 Manufacturing & Installation Standards, which specify the requirements for cable tray systems designed for use in accordance ...



Cable Tray Systems (ANSI). NECA/NEMA 105-2002 is an adoption of ANSI/ NEMA VE 2-2001, Metal Cable Tray Installation Guidelines. The complete text of NEMA's publication is reproduced here, in ...



Metal cable tray systems for power communications cabling shall be installed in accordance with NECA/NEMA 105, Standard for Installing Metal Cable Tray Systems (ANSI).



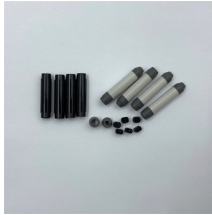
Cable tray system design shall comply with National Electrical Code® (NEC®) Article 392, NEMA BI-50015 (formerly VE 1), and NEMA 270 FG 1, and follow safe work practices as described in NFPA ...



This article provides a comprehensive framework that governs various aspects of cable tray installations, including the types of cables that are deemed acceptable for use, requirements for ...



This publication provides comprehensive guidelines for the proper installation of cable tray systems, ensuring compliance with industry standards like NEC Article 392 and NEMA VE 1, among ...



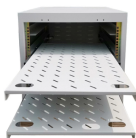
This article explains the main requirements and good practices for cable tray systems, including tray types, materials, loading, supports, bonding, cable selection, and installation details.



Specifies requirements for metal cable trays and associated fittings designed for use in accordance with the rules of Canadian Electrical Code, Part I and the National Electrical Code®



This standard specifies the requirements for nonmetallic cable trays and associated fittings designed for use in accordance with the rules of the Canadian Electrical Code (CEC) Part 1, and the National ...



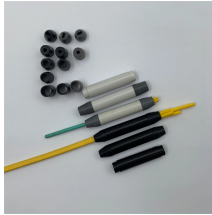
It provides rules for acceptable wiring methods that can be installed in cable trays, including conditions for use. It addresses uses permitted and not permitted for ...



Attaching a channel cable tray by using the method illustrated in Figure 3-88 maintains the electrical requirements, and the bolted mechanical connection while providing a practical method for dropping ...



This standards publication provides technical requirements concerning the construction, testing, and performance of metal cable tray systems. The development of this publication is the result of many ...



The National Electrical Manufacturers Association (NEMA) Standards and guideline publications, of which the document herein is one, are developed through a voluntary Standards ...



This guide for engineers and installers has been developed by ABB as a practical reference regarding cable tray characteristics, installation, and requirements.

## Contact Us

For more information, pricing, or custom solutions, please contact us:

Website: <https://indzawo.co.za>

Email: [sales@indzawo.co.za](mailto:sales@indzawo.co.za)

Phone: +27 71 296 8473

Address: 22 Quantum Street, Midrand, 1685, Gauteng, South Africa

This document is for informational purposes only. Specifications subject to change without notice.

