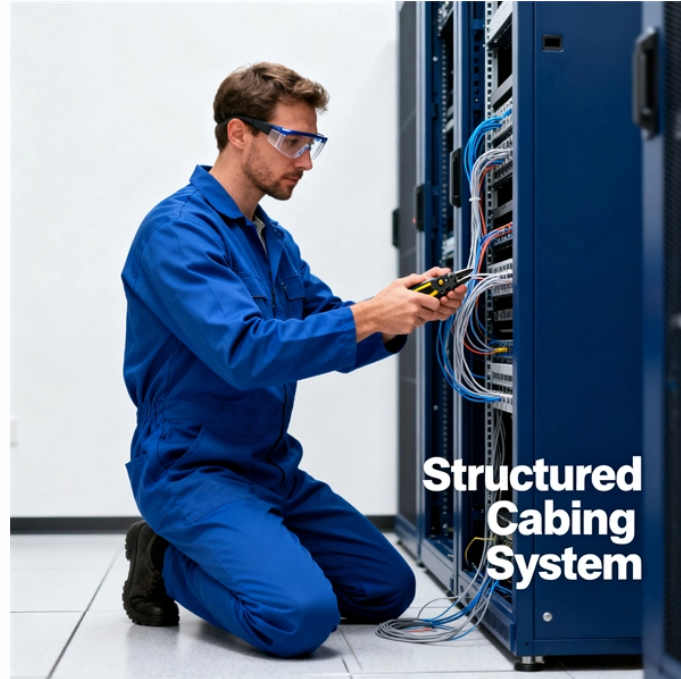


No drilling is required to fix the distribution box



No drilling is required to fix the distribution box



Neutral conductor bonding. A neutral conductor shall be bonded to the generator frame if the generator is a component of a separately derived system. No other conductor need be bonded to the generator ...



The NEC requires at least 1/4-inch of the exterior plastic sheathing to be inside the box. Tighten the locking swing clamps with a screwdriver or drill to snug the box to the drywall.



This guide explains the key NEC junction box requirements, including box fill, splice rules, accessibility, grounding, outdoor use, common violations, and how to choose the right metal junction ...



Box installation: Place the cable distribution box on the installation surface, align with the expansion bolt position, and tighten the screw firmly. Ensure that the box is level and stable, without ...



NEC Article 314 establishes requirements for the installation and use of electrical boxes, conduit bodies, fittings, and handhole enclosures.



General Technical Particulars for LT Distribution Boxes : - The L.T. Distribution Boxes should be of the dimensions as per the drawing & details in the table furnished.



Introduction
Understanding The Components of A Distribution Box
Selecting The Right Distribution Box
Site Preparation and Location Requirements
Electrical Connections and Wiring
Compliance with Standards and Regulations
Conclusion
Proper installation of a distribution box isn't just a technical requirement. It's a vital step in ensuring the safety and efficiency of your entire electrical system. Following best practices reduces the risk of electrical fires, power outages, and other hazards, protecting your property and keeping everyone safe. If you're looking for a reliable,...
See more on eabel
Published: Feb 7, 2025
Occupational Safety and Health Administration



No. Distribution boxes are standard in conventional gravity-fed systems with multiple lateral lines. If your drain field has only one lateral line, a D-box is typically not needed.



Learn how to install a distribution box safely and correctly. Covers wiring, placement, standards, and expert tips for a compliant setup.



Mount the electrical connection device needed for your project to the inside of the electrical junction box, and run wires through the conduit connecting them to the device according to the manufacturer's ...



Elevate your Promaster's functionality with our Promaster Driver Side Rear Door Spare Tire / Box Rack. Engineered for ease and durability, this carrier mounts directly to factory hinges, requiring no drilling.

Contact Us

For more information, pricing, or custom solutions, please contact us:

Website: <https://indzawo.co.za>

Email: sales@indzawo.co.za

Phone: +27 71 296 8473

Address: 22 Quantum Street, Midrand, 1685, Gauteng, South Africa

This document is for informational purposes only. Specifications subject to change without notice.

