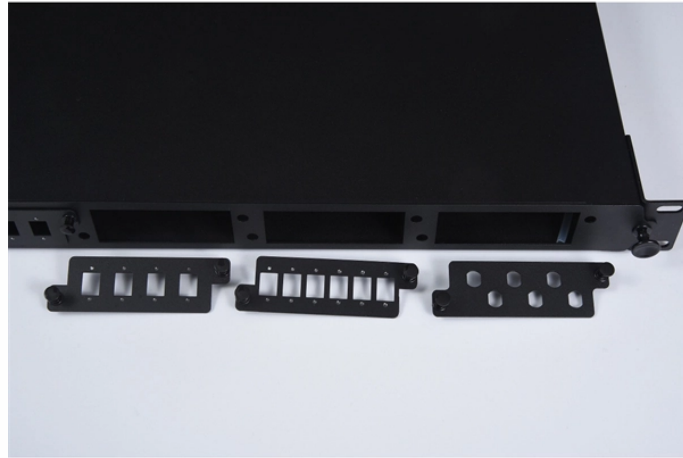


Non-metallic capacity of cable trays



Non-metallic capacity of cable trays



MP Husky's cable tray selector for choosing the correct tray type (ladder, solid bottom, perforated, wire mesh) and size based on load, cable type and installation requirements.



It provides rules for acceptable wiring methods that can be ...



Use this cable tray sizing calculator to check fill %, select tray size, and comply with IEC 61537 & NEC 392 with formulas, example and checklist.



o wind, weather, and saltwater. Nonmetallic cable tray gives you the load capacity of steel plus the inherent characteristics afforded by our pultrusion technology: non-conductive, non. magnetic and ...



To maintain compliance and optimize system performance, best practice recommendations suggest keeping cable trays at 50% capacity or less. This approach not only ...

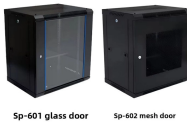


Cable tray must be capable of supporting not just the weight of the cable, but also the weight of any equipment or materials attached to the cable tray. Additionally, dynamic environmental elements ...



Eaton's B-Line series fiberglass cable tray systems provide an economical support system with superior strength at room temperatures and dependable load bearing capabilities at continuously elevated ...

Mesh door/glass door optional



Sp-601 glass door Sp-602 mesh door

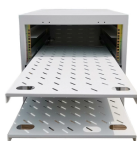
It provides rules for acceptable wiring methods that can be installed in cable trays, including conditions for use. It addresses uses permitted and not permitted for cable trays.



In designing supports for a cable tray system, consideration should be given to the loads associated with future cable additions and any additional loading that may be applied to the cable tray system (e.g., ...



Size, weight and availability of complete range of fittings are key factors for modulator construction, and all elements are considered including cable support systems. This paper will explore the use of non ...



The load-bearing capacity of cable tray systems is directly related to their electrical cable tray dimensions, material thickness, and support spacing. Manufacturers publish load rating tables ...

Contact Us

For more information, pricing, or custom solutions, please contact us:

Website: <https://indzawo.co.za>

Email: sales@indzawo.co.za

Phone: +27 71 296 8473

Address: 22 Quantum Street, Midrand, 1685, Gauteng, South Africa

This document is for informational purposes only. Specifications subject to change without notice.

