

Nordic Price Quote for Special Optical Cable G 657A2



Nordic Price Quote for Special Optical Cable G 657A2



This article analyzes why prices for g 657a2 fiber have shattered records, provides a data-backed forecast for March-April 2026, and offers a strategic roadmap for buyers facing this "one price ...



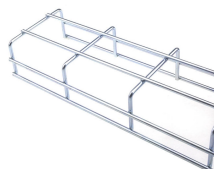
OS2: 9/125 single-mode fiber cable (G657A2) used in networking over large areas or backbone applications between buildings with a maximum distance of 40 km Connectors: LC to LC



This OS2 fibre patch cable is ideal for connecting 1G/10G/25G/40G/100G/400G Ethernet connections. It is best suited for long distance application and can transport data for up to 10km at 1310nm, or up to ...



Discover our G.657.A2 low diameter single mode optical fiber, ideal for high-performance networks. Explore the benefits of low diameter optical fiber today!



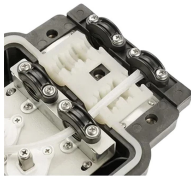
FTTH cables are ideal for indoor cabling, end users directly cabling, and access network. The optical fiber unit is positioned in the center. Two parallel Fiber Reinforced Plastics (FRP) are placed at the ...



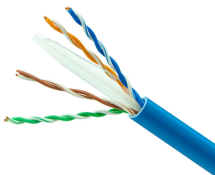
“Leviton is dedicated to designing, developing and manufacturing sustainable high performance structured cabling and specialty cabling solutions.”
The information contained in this document is ...



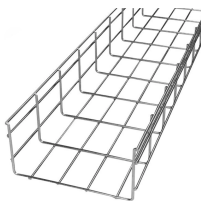
See why G.657A2 and G.652D optical fiber prices are rising in 2025–2026, how FTTH cable budgets are affected, and what procurement teams in Europe, Latin America, Africa and the ...



Bend-insensitive optical bare fiber G.657 A2 has two excellent ...



OPTIX cable Mini LSZH B2ca W-NOTKSdD INFC201 - internal round cables for use in areas requiring special fire protection (escape routes) in FTTx systems, reinforced with aramid fibres.



Bend-insensitive optical bare fiber G.657 A2 has two excellent properties at the same time: excellent bending resistance and low water peak, which can fully utilize the O-E-S-C-L band (1260~1625nm) ...



In the center of the cable is the optical communication unit, with the two parallel non-metallic enhanced FRP/Metal/KFRP as the strength member, and surrounded with the LSZH jacket.

Contact Us

For more information, pricing, or custom solutions, please contact us:

Website: <https://indzawo.co.za>

Email: sales@indzawo.co.za

Phone: +27 71 296 8473

Address: 22 Quantum Street, Midrand, 1685, Gauteng, South Africa

This document is for informational purposes only. Specifications subject to change without notice.

