

# Optical Coupler Components



## Overview

When specifying optical couplers you should consider the fiber optic cable, the coupler type, signal wavelength, number of inputs and outputs, as well as insertion loss, splitting ratio, and polarization dependent loss (PDL). Fiber optic couplers can either be passive or active devices. Passive fiber optic couplers are said to be passive as no power is required for operation. They are simple fiber optic components that are used to redirect light waves. Passive couplers either use micro-lenses, graded-refractive-index (GRIN) rods and beam splitters, optical mixers, or spl. Types of fiber optic couplers include splitters, combiners, X-couplers, trees, and stars, which all include single window, dual window, or wideband transmissions. Fiber optic splitter take an optical signal and supply two outputs. They can further be described as either Y-couplers or T-couplers. 1. Y-couplers have equal power distribution, meaning t.

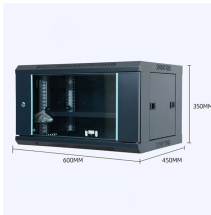
## Optical Coupler Components



Corning's optical couplers are fused fiber branching devices that split off a portion of light to allow for optical monitoring and feedback. These devices are used extensively in fiber amplifier power control, ...



Here you'll find the full range of products available at LASER COMPONENTS.



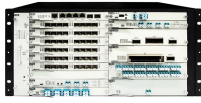
Our inventory features high-performance components from industry-leading brands such as Panduit, Phoenix Contact, L-com and our brand RS PRO. Use our advanced filtering tools to find the fiber ...



Types of fiber optic couplers include splitters, combiners, X-couplers, trees, and stars, which all include single window, dual window, or wideband transmissions.



Important passive components are optical couplers, isolators, multiplexers/demultiplexers, and filters. Some components, such as optical filters, can be either passive or active depending on the ...



Fiber optic couplers are used to split or combine optical signals in optical fiber systems. It contains various types like optical splitters, optical combiners and optical couplers. This tutorial ...



Fiber couplers, inline photodiodes, WDMs, combiners, circulators, and optical switches provide fundamental building blocks for fiber-based optical circuits.



Fiber couplers belong to the basic components of many fiber-optic setups. Note that the term fiber coupler is used with two different meanings: It can be an optical fiber device with one or more input ...



Optics Fiber Optics Fiber Optic Components Fiber Optic Couplers Fiber Optic Couplers Fiber-optic couplers are used to split or combine the light contained in optical fibers. Show Filters:



But what about the components that quietly, efficiently manage the flow of light itself? Enter the Fiber Optic Coupler - a fundamental, yet often overlooked, passive device that is crucial for ...

## Contact Us

For more information, pricing, or custom solutions, please contact us:

Website: <https://indzawo.co.za>

Email: [sales@indzawo.co.za](mailto:sales@indzawo.co.za)

Phone: +27 71 296 8473

Address: 22 Quantum Street, Midrand, 1685, Gauteng, South Africa

This document is for informational purposes only. Specifications subject to change without notice.

