

Parameters of Andorra Garden Distribution Box



Overview

● Altitude: ≤ 1000 meters; ● Earthquake resistance: horizontal seismic acceleration less than 0.67 ● Installation site without severe vibration, slope not greater than 3° ● Wind speed not exceeding 35m/s; Strong integration, easy installation, short construction period, low operating costs, high structural strength, and strong corrosion resistance The YBF series wind power box-type substation products are specially designed and developed by our company for wind power generation. The role of the box. Customer Care Through-wiring within the luminaire is not possible for certain luminaires or connecting pillars. Applicable Standards: 1200V DC. IS 13703 (Part-1&2)-1993 / IEC 60263/1-1986: How does 6W market outlook report help businesses in making decisions?

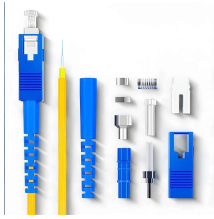
6W monitors the market across 60+ countries Globally, publishing an annual market outlook report that analyses trends, key drivers, Size, Volume, Revenue, opportunities, and market segments. This report offers comprehensive. These Distribution Boxes enable decentralized installation of the electronics close to the load. The range of applications extends from pure

energy distribution in buildings to building automation and through to industrial plants. SMART DISTRIBUTION BOXES FOR FLEXIBLE BUILDINGS.

Parameters of Andorra Garden Distribution Box



It is a new type of prefabricated substation developed for the special usage requirements of wind power generation, featuring strong integration, easy installation, short construction period, low operating ...



The GPRS Interface & Controller shall be suitable for operation in outdoor, housed in a metal box (See drawing Annexure A) and shall be capable of with standing temperature variation from -50C to ...



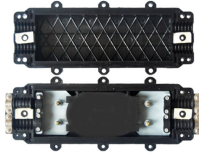
Our distribution boxes are modular systems that you can customize for your application. The article number consists of three blocks: connector type, cable type and cable length. Murrelektronik's M8 ...



Market Forecast By GardeProduct (Lawn Mowing Machines, Handheld Tools, Tillers, Cleaning, Others), By Power Source (Petro, Electric Corded, Battery, Cordless, Others), By Material (Wood, Metal, ...



After connecting the electrical lines to the terminals, the distribution box must be filled with the sealing compound supplied. You can find the complete technical data for the distribution boxes in the ...



Terminal boxes has plenty of connection space. The boxes have a knock-out FL13 on the upper and lower sides. The connectable area is 25 mm² and earth max 16 mm². Protection class IP44.



The box shall be provided with an Aluminium Earth bus at the bottom, suitable for the rated short time current of the box. The earth bus shall provide Earthing to all the components inside the pillar and ...



The distribution boxes are subject to a type test, which includes EMC, temperature, IP, the IK test and the corrosion test. In addition, a routine test is carried out, which consists of a visual inspection, a ...



The box is UL Listed for Outdoor Use and required to mount off the floor away from water, dust, mud, and other harmful environmental elements, with both 6-circuit and 8-circuit versions available, with or ...

Contact Us

For more information, pricing, or custom solutions, please contact us:

Website: <https://indzawo.co.za>

Email: sales@indzawo.co.za

Phone: +27 71 296 8473

Address: 22 Quantum Street, Midrand, 1685, Gauteng, South Africa

This document is for informational purposes only. Specifications subject to change without notice.

