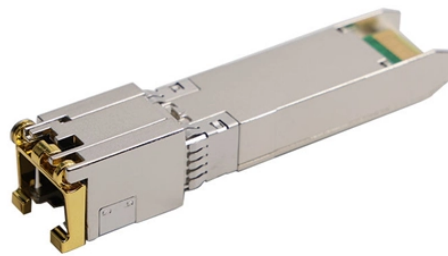


## Place the electrical distribution box next to the stairs



### Overview

In summary, electrical panels can be located anywhere other than in bathrooms, clothes closets, above steps of a stairway or in fire-rated partitions or area separation walls as long as the proper working clearances are provided per NEC 110. 26, and the enclosure type is. While not specifically excluded by the National Electrical Code (NEC), there are two code standards that a panel must comply with to be located under a stair: 1) The under-stair space is usually a closet, and a panel cannot be located in a closet near ignitable material [NEC 240. Electrical equipment must have a minimum 30". Wherever you may want to place your circuit box, you must follow the electrical panel mounting requirements dictated by the NEC (National Electrical Code). For the sake of brevity, The National Electrical Code outlines that a breaker box must be installed in an area that provides clearance around. Electrical panels need to be installed 4' off the ground with the center grip handle of the highest circuit breaker is no more than 6'7" high to be NEC compliant. The clearance around the electric panel must be at least 30 inches wide with 3' of front workspace clearance. Ask anything, and I'll do my best to get you what you need. COPYRIGHT © 2026 INTERNATIONAL CODE COUNCIL,

INC.

## Place the electrical distribution box next to the stairs



Section 240.24 (F) prohibits overcurrent protective devices from being installed/located over the steps of a stairway. As long as the required working space can be maintained, a panelboard ...



While the National Electrical Code prohibits the placing of an electrical panel in tight spaces, it does not outlaw its installation under stairways - as long as the area is spacious enough.



Every electrical panel, breaker box, meter base, and service disconnect needs a clear working zone in front of it so that someone can safely operate the equipment or respond to an ...



Are Electrical Panels Allowed Over Stairs? When looking at the stairs, we occasionally see electric panels in stairways of a basement or where a homeowner added an addition, usually ...



NEC 110.26 requires electrical equipment (including electrical panels) to be located to provide required working clearances about the equipment. Electrical equipment must have a ...



Although not as common, some homes have sufficient space under the stairs to accommodate an electrical panel. However, if the area is too cramped, installation should be avoided.



The electrical panel delivers all your electricity needs, but it might ruin your aesthetic. Here are the electrical panel location rules so you can choose the best spot.



ICC Digital Codes is the largest provider of model codes, custom codes and standards used worldwide to construct safe, sustainable, affordable and resilient structures.



The electrical panel delivers all your electricity needs, but it might ...



There is rarely that much clear floor area in an under-stair closet for a panel, or that much headroom. And an appliance in the closet, such as a water heater, cannot infringe on the required area.



Are Electrical Panels Allowed Over Stairs? When looking at the stairs, we occasionally see electric panels in stairways of a basement or where a ...



Do these panelboards only serve stair related loads? There are a couple of requirements from NFPA 101 and the 2020 NEC that prohibit installing conduit or wiring not required for the stairs ...

## Contact Us

For more information, pricing, or custom solutions, please contact us:

Website: <https://indzawo.co.za>

Email: [sales@indzawo.co.za](mailto:sales@indzawo.co.za)

Phone: +27 71 296 8473

Address: 22 Quantum Street, Midrand, 1685, Gauteng, South Africa

This document is for informational purposes only. Specifications subject to change without notice.

