

PoE switch port shutdown



Overview

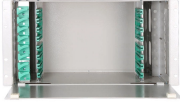
Non-PoE devices on other ports work fine. Command power inline never applied. CLI Checks: Troubleshooting Steps: Verify port admin status (no shutdown). Just so we are confusing folks - We don't turn off switch port just to turn off PoE. To disable PoE only for an interface, go into interface config mode and use "power inline never" and then to enable PoE use "power inline. Re-enables PoE operation on <port-list> and restores the priority setting in effect when PoE was disabled on <port-list>. Default: All PoE ports are initially enabled for PoE operation at Low priority. If you configure a higher. Does issuing the shut down command on a Cisco switch port disable the power to the port?

That is, are you effectively power cycling the connected/powered device when you issue the shut down command on the port?

Thanks! Yes You can also do a "power inline never". This is handy with range, for. Summary: This article provides instructions on how to temporarily deactivate and reactivate Power over Ethernet (PoE) on a port to reboot a

device. This is useful in scenarios where you may have lost access to a particular device and it requires a reboot. The device is working on the required ac power supply which can not be removed as device gets powered off completely.

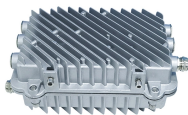
PoE switch port shutdown



Learn how to troubleshoot PoE issues on Cisco Catalyst switches. Step-by-step diagnosis for no power, intermittent resets, partial power, and camera failures.



Summary: This article provides instructions on how to temporarily deactivate and reactivate Power over Ethernet (PoE) on a port to reboot a device. This is useful in scenarios where ...



Power-off or reboot only the suspected switch. Disconnect the stacking cables. Now console into the suspected switch and collect the requested outputs for the PoE Failure? Once you ...



Summary: This article provides instructions on how to temporarily deactivate and reactivate Power over Ethernet (PoE) on a port to reboot a device. ...



Catalyst 3650 has the "range" command. So, you may do the command "interface fa0/1 - 48" to specify range of interfaces (make sure you use spaces between "-" and numbers). Then you ...



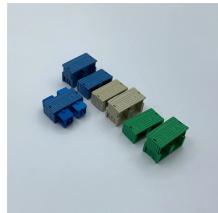
If it "thinks" the switch provides power the injector simply passes through and it does not in itself supply power. The only way to get the injector to "see" that no POE is provided is to unplug the ...



The shutdown of a Power over Ethernet (PoE) port, a seemingly simple event, can trigger a cascade of issues, particularly in networked environments. This essay will explore the multifaceted implications ...



When you use "shut" you are turning off the port transmit/receive and PoE. To disable PoE only for an interface, go into interface config mode and use "power inline never" and then to enable ...



If you are accessing the switch via the uplink port (not in the range) then you can use "shut" and "no shut" which will drop the links (and cause all connected PCs to release their IP ...



When your equipment is drawing 2.4A at 12V it is consuming 28.8W from the power supply, the power supply is drawing 32W from POE, which means the port is being asked to deliver significantly more ...



Default: All PoE ports are initially enabled for PoE operation at Low priority. If you configure a higher priority, this priority is retained until you change it.

Contact Us

For more information, pricing, or custom solutions, please contact us:

Website: <https://indzawo.co.za>

Email: sales@indzawo.co.za

Phone: +27 71 296 8473

Address: 22 Quantum Street, Midrand, 1685, Gauteng, South Africa

This document is for informational purposes only. Specifications subject to change without notice.

