

## PoE switch short circuit problem



### Overview

Check whether the port triggers overload/short circuit protection: If the management interface displays "Port PoE protection triggered": it may be the short circuit of the powered device (such as the failure of the device power module), disconnect the device to test whether. Check whether the port triggers overload/short circuit protection: If the management interface displays "Port PoE protection triggered": it may be the short circuit of the powered device (such as the failure of the device power module), disconnect the device to test whether. A PoE port short-circuit does pose a real risk of damaging devices. This isn't an exaggeration; it's a real hardware disaster that can occur and requires serious attention. What adverse events can occur when a PoE port short-circuit occurs?

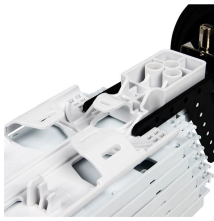
A short circuit can happen in a PoE device's network. In a basic PoE power supply system, the major components are the power sourcing equipment (PSE), the powered device (PD), and the PoE cables. When a problem occurs with PoE, in most cases, the error symptom can be simply shown as the PoE switch not providing power, and the powered devices will stop. Ours returned

some strange errors - short circuit, no PD detect, overload, maybe some others I've forgotten - all on the same devices and cabling that the previous Brocade switches had been running just fine for years. PoE errors on the device seen on CLI. These are widely used in various data networks across industries, retail chains, traffic control systems, and other diverse applications.

## PoE switch short circuit problem



The solution for troubleshooting a PoE issue includes trying the steps outlined below before concluding that the issue is due to configuration problems, interoperability issues, or physical ...



Power over Ethernet (PoE) is a convenient technology that enables network cables to carry electrical power, eliminating the need for additional wiring. However, PoE setups can encounter ...



This is a common place of failure and maybe the PoE is shorting and causing a rest of the switch (not necessarily a full reboot of the switch) just enough to jolt the Phones and the PC connection.



Common PoE faults include PoE switch not providing power, a PD powering off or reloading, and some PD powering on while others are not. Here provides PoE troubleshooting lists ...



Check whether the port triggers overload/short circuit protection: If the management interface displays "Port PoE protection triggered": it may be the short circuit of the powered device ...



I have a TL-SG1210P poe switch that I'm planning to use for exterior IP Cameras, and I wanted to know what would happen if someone were to cut the ethernet cable and cause a short circuit.



These issues must be identified during rollout of the PoE network so they can be resolved immediately, and this goes well beyond negotiating PoE and measuring voltage.



Read about the common problems in PoE and how to troubleshoot it. Versitron is the leading manufacturer of fiber optic network switches and PoE Switches. Get in touch with us today.



Learn how to troubleshoot PoE issues on Cisco Catalyst switches. Step-by-step diagnosis for no power, intermittent resets, partial power, and camera failures.



A short circuit can happen in a PoE device's network cable port. Issues like faulty connectors, damaged cables, water entering the module, or dust buildup can cause this.

## Contact Us

For more information, pricing, or custom solutions, please contact us:

Website: <https://indzawo.co.za>

Email: [sales@indzawo.co.za](mailto:sales@indzawo.co.za)

Phone: +27 71 296 8473

Address: 22 Quantum Street, Midrand, 1685, Gauteng, South Africa

This document is for informational purposes only. Specifications subject to change without notice.

