

## PoE switch wiring sequence not working



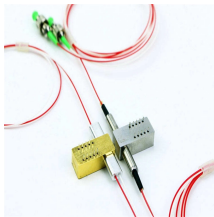
### Overview

If your Cisco switch PoE is not working, the most common causes are an exhausted PoE power budget, a disabled inline power configuration, physical cable faults, incompatible powered devices (PD), or a crashed PoE controller. Power over Ethernet (PoE) is a convenient technology that enables network cables to carry electrical power, eliminating the need for additional wiring. However, PoE setups can encounter various issues. Here are some common PoE issues and how to troubleshoot them: 1. To isolate the problem fast, log into the Catalyst switch and run show. To restore PoE functionality safely and efficiently, IT teams must follow a structured troubleshooting approach that covers basic checks, advanced diagnostics, and hardware reliability considerations. Misconfiguration or prior commands like. In PoE, there are three entities- a powered device (PD), PoE cable, and power sourcing equipment (PSE).

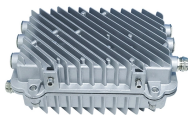
## PoE switch wiring sequence not working



Learn how to fix a Cisco switch PoE not working. Diagnose single-port failures, power budget exhaustion, and Cisco 9300 SFP port issues with this ...



This article addresses common PoE network issues, best practices for maintenance, troubleshooting tools, and real-world case studies.



This document describes the troubleshooting workflow for Power over Ethernet (PoE) on Catalyst 9000 PoE-capable switching platforms.



Insufficient Power - First, check the powering switch, its power management configuration, and if it's working properly. If that is fine, then check the cabling, their connected ports, ...



Learn how to diagnose and fix Cisco switch PoE issues. Check PoE status, enable PoE on ports, and troubleshoot common errors like "no PoE" or "no power to common c wire detected" to maintain ...



Power over Ethernet (PoE) is a convenient technology that enables network cables to carry electrical power, eliminating the need for additional wiring. However, PoE setups can encounter ...



A guide to how PoE works, how to select compatible equipment, and what you need to be aware of and test for when installing or troubleshooting PoE.



Follow these steps to resolve the problem: Step 1: Check the PoE IEEE standard and the power supply modes of PSE and PD. If your PoE network switch and PD do not have quality issues, you need to ...



Learn how to troubleshoot PoE issues on Cisco Catalyst switches. Step-by-step diagnosis for no power, intermittent resets, partial power, and camera failures.



Learn how to fix a Cisco switch PoE not working. Diagnose single-port failures, power budget exhaustion, and Cisco 9300 SFP port issues with this engineer's guide.



Common PoE faults include PoE switch not providing power, a PD powering off or reloading, and some PD powering on while others are not. Here provides PoE troubleshooting lists ...

## Contact Us

For more information, pricing, or custom solutions, please contact us:

Website: <https://indzawo.co.za>

Email: [sales@indzawo.co.za](mailto:sales@indzawo.co.za)

Phone: +27 71 296 8473

Address: 22 Quantum Street, Midrand, 1685, Gauteng, South Africa

This document is for informational purposes only. Specifications subject to change without notice.

