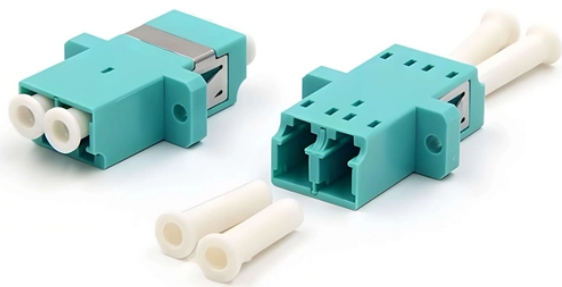


Power Station Relay Protection Equipment



Power Station Relay Protection Equipment



Protect critical components in your power system with a wide range of SEL protective relays covering applications and use cases from low to high-voltage protection.



Protective relays and devices have been developed over 100 years ago to provide “lastline” of defense for the electrical systems. They are intended to quickly identify a fault and isolate it so the balance of ...



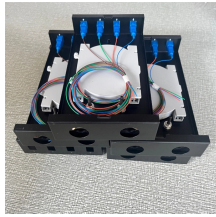
At the core of a modern substation lies the protection relay: an intelligent electronic device (IED) that plays a critical role in maintaining the stability of the power grid by continuously...



In comparing protection design to the objectives and criteria set forth, consideration must be given to the type of equipment to be protected as well as the importance of this equipment to the system.



At the core of a modern substation lies the protection relay: an intelligent electronic device (IED) that plays a critical role in maintaining the ...



GE Vernova's Protection, Control, and Metering solutions deliver precise, high-performance automation for today's evolving grid. From advanced relays to multifunction meters, our portfolio helps utilities ...



Protective relays are essential in power systems to detect faults, isolate problem areas, and prevent widespread damage. Their use spans high-voltage transmission, industrial machinery, ...

LoRa handheld portable base station



Power distribution systems are undergoing a major evolution with distributed generation from renewables gaining ground as part of the energy mix. Energy demand is continually rising and so is ...



Power System protection is crucial part of power station and substations safety which use protection relays and circuit breakers to isolate faulty parts or zones within the plant including Generator zone, ...



Without adequate protection, key substation components, including transformers and power lines, are susceptible to damage. Protection measures include advanced quick-trip settings, ...



Relay systems protect high-voltage equipment and transmission lines to ensure safe, stable systems. Although failure of a protective relay system may have severe local or regional impacts, most ...

Contact Us

For more information, pricing, or custom solutions, please contact us:

Website: <https://indzawo.co.za>

Email: sales@indzawo.co.za

Phone: +27 71 296 8473

Address: 22 Quantum Street, Midrand, 1685, Gauteng, South Africa

This document is for informational purposes only. Specifications subject to change without notice.

