

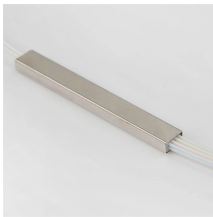
Power fiber optic cable level two and three



Power fiber optic cable level two and three



This is your "QuickStart" guide to testing optical power in fiber optic communications systems with a fiber optic power meter. We'll give you the basic information you need and provide some printable ...



This procedure outlines Level 2 test to be performed on Fiber Optic Cable. Perform the following tests with OTDR and Power Meter on each individual fiber at 1310 nm and 1550 nm in both directions after ...



In the context of fiber optic testing, this term is usually applied without deference to any specific set of network electronics. In other words, when a fiber optic link's performance is evaluated, ...



Our easy-payout boxes for Category 5e and Category 6 cables were designed with direct input and feedback from users. Our boxes feature dual reinforced handles and have proven to be as durable ...



Demystify how optical power is measured, why it decreases, and the critical thresholds that define reliable fiber network performance.



There are five ways listed in various international standards from the EIA/TIA and ISO/IEC to test installed fiber optic cable plants. Three of these methods use test sources and power meters to make ...



Different levels must be run in separate conduit or wire trays. Classes within a level must be run in separate conduit, but may be run in the same wire trays as long as they are grouped and separated.



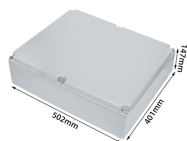
LANshack offers premium fiber optic cable & copper wire assemblies. We have all the components to optimize & install your network!



The most basic fiber optic measurement is optical power from the end of a fiber. This measurement is the basis for loss measurements as well as the power from a source or presented at a receiver.



Power measurement is one of the most important testing procedures because it shows how effectively a fiber optic communication system is working, and whether it is meeting its minimum specifications.



In fiber optic testing, you often see power levels given in dBm or mW. Understanding the difference between them is crucial. These two units measure optical power, but they operate ...



Prior to installation, fiber inspections are performed to ensure that the fiber cables received from the manufacturer conform to the required specifications (length, attenuation, etc.) and have not been ...

Contact Us

For more information, pricing, or custom solutions, please contact us:

Website: <https://indzawo.co.za>

Email: sales@indzawo.co.za

Phone: +27 71 296 8473

Address: 22 Quantum Street, Midrand, 1685, Gauteng, South Africa

This document is for informational purposes only. Specifications subject to change without notice.

