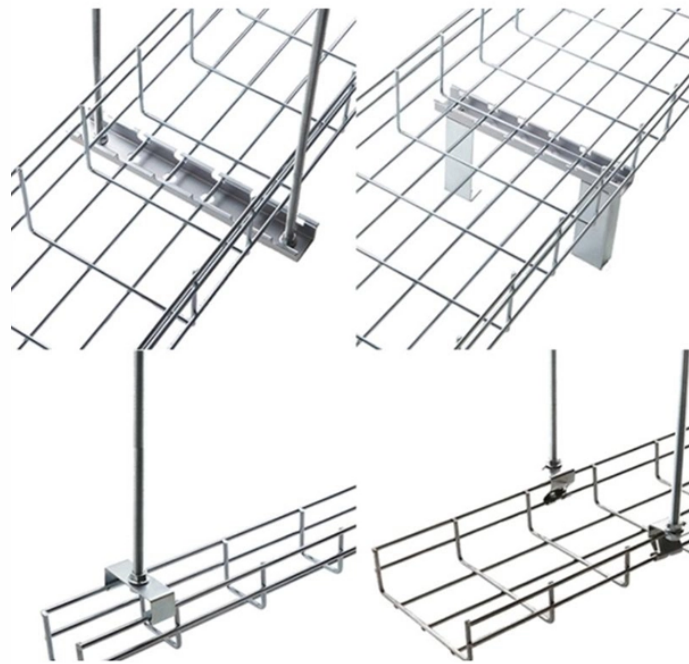


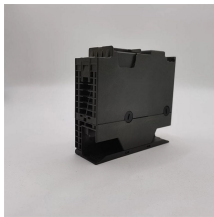
## Power supply line to lighting distribution box



## Power supply line to lighting distribution box



The problem of transmitting electricity over longer distances became a recognized engineering roadblock to electric power distribution, with many less-than-satisfactory solutions tested by lighting ...



A Sub Circuit can be an electric cable distributing power to few lights, or a socket outlet/s through a MCB device or a Fuse in the Distribution Board. Here we are considering a Distribution Board with MCBs ...



Browse power distribution boxes with circuit breaker protection and multiple outlet configurations. Shop durable solutions for construction and emergency use.



Power distribution box: incoming line 380avc / 3 is mainly used for power distribution of motor and other power equipment. In addition, when the total incoming line ...



Power distribution box is a kind of distribution box. The distribution box is divided into power distribution box and lighting distribution box, which is the final equipment of the power distribution system.



With one input and several outputs, these boxes allow multiple devices to connect through the distro instead of directly to the power supply. This setup enhances safety while making ...



The transformer is supplied by a higher voltage circuit to allow for smaller wire over the longer distance. Lighting and transformer supply circuits shall initially be evaluated at 240 volts, unless there is a ...



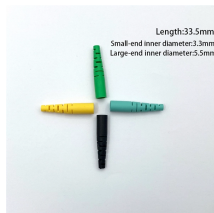
The plans identify and locate luminaire types and special purpose outlets and power connections and locate general purpose outlets. All conduit and conductor requirements associated with this ...



This information provides a foundation to understand electrical power distribution systems, the types of information that can be found on electrical drawings, and studies that are used to confirm proper ...



lighting distribution box (small power distribution unit): Mainly used to distribute and control the power supply to lighting equipment, such as lamps, lighting circuits and lighting control systems.



The article discusses the wiring of typical 120-V branch circuits, focusing on receptacle outlets, switch outlets, and light outlets. It covers essential safety features, grounding requirements, and the ...



lighting distribution box (small power distribution unit): Mainly used to distribute and control the power supply to lighting equipment, such as lamps, lighting circuits ...

## Contact Us

For more information, pricing, or custom solutions, please contact us:

Website: <https://indzawo.co.za>

Email: [sales@indzawo.co.za](mailto:sales@indzawo.co.za)

Phone: +27 71 296 8473

Address: 22 Quantum Street, Midrand, 1685, Gauteng, South Africa

This document is for informational purposes only. Specifications subject to change without notice.

