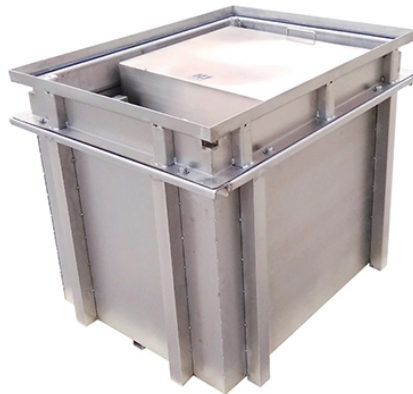


Production Quality Monitoring of Distribution Boxes



Overview

For distribution boxes, this means scrutinizing seven core areas: Production Machinery Capabilities (Can equipment maintain tolerances?)

) Raw Material Traceability (Where do components really come from?)

) IP-Rated Testing Procedures (How water/dust-resistant are units under. For distribution boxes, this means scrutinizing seven core areas: Production Machinery Capabilities (Can equipment maintain tolerances?)

) Raw Material Traceability (Where do components really come from?)

) IP-Rated Testing Procedures (How water/dust-resistant are units under. For distribution boxes, this means scrutinizing seven core areas: Production Machinery Capabilities (Can equipment maintain tolerances?)

) Raw Material Traceability (Where do components really come from?)

) IP-Rated Testing Procedures (How water/dust-resistant are units under stress?)

) Environmental. They involve systematic inspections of packaging materials and processes to verify that they meet specific standards and requirements, ensuring that products are securely and accurately packaged to maintain quality, safety, and compliance. These inspections help prevent product damage. Ercopac 's innovative quality control system integrates in-line wrapping tests and pallet compliance verification tools, enabling continuous, real-time monitoring. They come in different shapes, sizes, and materials, such as cardboard, corrugated fiberboard, and plastic. What is Packaging Inspection?

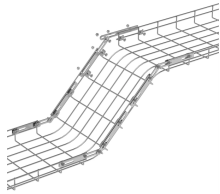
Packaging inspection is the process of evaluating packaging components and finished goods against predefined. Buy Android TV Box In Bulk is a high-leverage strategy for scaling distribution, but quality issues remain one of the biggest risks in this business.



Ensure top-notch quality with QCADVISOR's Boxes & Cartons inspection checklist & template. Simplify quality control and streamline your inspections today!



An effective monitoring system allows warehouse managers to track metrics such as machine throughput, downtime, and error rates. By analyzing these data points, managers can implement ...



Learn packaging quality control, including inspections, checklists, and standards to reduce damage, returns, and shipping risks.



Discover essential steps for effective quality control for packaging to enhance product integrity.



Perform packaging inspections to prevent defects, protect products, and ensure compliance. Explore their types & importance in quality control, and free templates.

Contact Us

For more information, pricing, or custom solutions, please contact us:

Website: <https://indzawo.co.za>

Email: sales@indzawo.co.za

Phone: +27 71 296 8473

Address: 22 Quantum Street, Midrand, 1685, Gauteng, South Africa

This document is for informational purposes only. Specifications subject to change without notice.

