

## Relay Protection Defect Analysis Data



### Overview

The original unstructured record data for the defect of the relay protection devices (RPDs) may contain problems influencing the data mining, and it is lack of quantitative evaluation. So the purpose of this.



## Relay Protection Defect Analysis Data



Fault tracking means that after the failure of relay protection devices, the anomalies and warning information are obtained through data-mining technology, and then, the fault tracking ...



This study suggests a method for diagnosing defects and evaluating the relay protection system in light of the aforementioned concerns. The method is founded on the K-means clustering ...



This study suggests a method for diagnosing defects and evaluating the relay protection system in light of the aforementioned concerns. The method ...



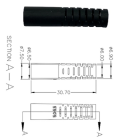
Based on 7-years defect data of RPDs in SGCC, this paper discovers the association rules (ARs) of defect data based on the Apriori algorithm. In ...



In this process, a large amount of defect processing data has been accumulated, including much unstructured textual data, and the purpose of this paper is to evaluate the quality of these ...



Defect diagnosis takes a long time, which leads to a long time exit of protection during defect. The existing intelligent defect diagnosis methods are carried out on a case-by-case basis, ...



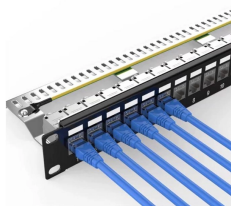
The new generation of intelligent substations has achieved online monitoring functions for secondary equipment, making some state variables of relay protection equipment become ...



Based on 7-years defect data of RPDs in SGCC, this paper discovers the association rules (ARs) of defect data based on the Apriori algorithm. In detail, the ARs among different categories of ...



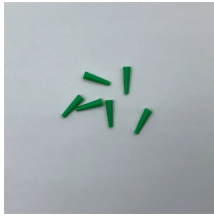
These data include sampled analog currents and voltages, status of input and output contacts, status of protection and control elements and relay settings . They are usually contained ...



The new generation of intelligent substations has achieved online monitoring functions for secondary equipment, making some state variables of ...



In this section, three common problems that occur in records text for the defect of PRDs are listed. This paper focuses on the defect processing logs of relay protection devices in a regional ...



The SVM algorithm classifies whether the relay protection action characteristics recorded by the filtered fault recording data meet the expectations, and completes the analysis of power ...

## Contact Us

For more information, pricing, or custom solutions, please contact us:

Website: <https://indzawo.co.za>

Email: [sales@indzawo.co.za](mailto:sales@indzawo.co.za)

Phone: +27 71 296 8473

Address: 22 Quantum Street, Midrand, 1685, Gauteng, South Africa

This document is for informational purposes only. Specifications subject to change without notice.

