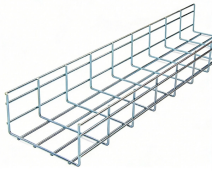




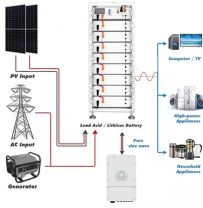


Relay Protection Device Acceptance Items



Relay Protection Device Acceptance Items

	<p>A comprehensive testing program should simulate fault and normal operating conditions of the relay. Acceptance testing, commissioning, and startup will include control power tests, current transformer ...</p>
	<p>A fast and selective arc fault mitigation for air-insulated LV & MV switchgear and Relion protection and control relays and sensor technology protect staff and plant facilities for many years.</p>
	<p>Facilities need to perform installation tests, implement preventive maintenance programs, and perform comprehensive commissioning tests to verify the integrity of both existing protective relay systems ...</p>
	<p>Protective relay system maintenance includes the entire protective relay system consisting of relay inputs, the protective relays themselves, and the relay outputs.</p>
	<p>Individual test programs for each type of protection relay are needed, but the interface used is standard for all protection relay types. Control of input waveforms and analogue measurements, the ...</p>



The guide presents protective relay degradation, reliability, and failure information so as to establish a baseline from which recommended maintenance practices can be linked to a degradation ...



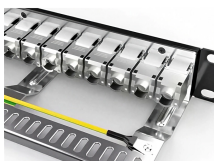
This handbook covers the code of practice in protection circuitry including standard lead and device numbers, mode of connections at terminal strips, colour codes in multicore cables, dos ...



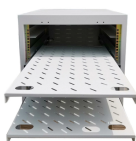
The equipment is designed as a portable kit for on-site testing of protective devices, circuit-breakers, trip coils motor overloads and similar apparatus. The filter unit should be used when testing saturating ...



The objective of this presentation is to convey a basic understanding of protective relays to an audience of engineers already familiar with low voltage protective device coordination.



The purpose of this guide is to provide protection engineers with information that helps them to properly apply relays and other devices to protect three-phase high-voltage transmission lines.



This test determines whether protective relays, fault pressure relays, reclosing relays, reclosing supervisory relays, and associated control schemes are operating properly.

Contact Us

For more information, pricing, or custom solutions, please contact us:

Website: <https://indzawo.co.za>

Email: sales@indzawo.co.za

Phone: +27 71 296 8473

Address: 22 Quantum Street, Midrand, 1685, Gauteng, South Africa

This document is for informational purposes only. Specifications subject to change without notice.

