

Relay protection TJQ and TJR



Relay protection TJQ and TJR



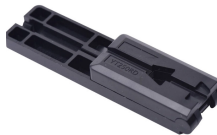
This guide deals primarily with the application of electrical relays and over-current protective devices to detect the fault current that results from an insulation failure.



A relay is an electrical switch that can be activated by a low-power signal. Learn more about what is a relay and their many applications here!



Relays are electrically operated switches that open and close the circuits by receiving electrical signals from outside sources. Some people may associate “relay” with a racing competition where members ...



Fundamental concepts and terminology will be taught using the electromechanical overcurrent relay as a foundation and then these concepts will be expanded to modern numerical relays.



Protective relays and devices have been developed over 100 years ago to provide “lastline” of defense for the electrical systems. They are intended to quickly identify a fault and isolate it so the balance of ...



Understanding the different types of protective relays and the applications of differential relays is crucial for anyone involved in electrical engineering or maintenance.



A relay is an electromagnetic switch that opens and closes circuits electromechanically or electronically. A relatively small electric current that can turn on or off a much larger electric current operates a relay.



When underfrequency protection is employed, two underfrequency relays connected with “AND” tripping logic and connected to separate voltage sources are recommended to enhance scheme security.



A Relay is a simple electromechanical switch. While we use normal switches to close or open a circuit manually, a Relay is also a switch that connects or disconnects two circuits.



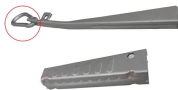
Electromechanical protective relays at a hydroelectric generating plant. The relays are in round glass cases. The rectangular devices are test connection blocks, used for testing and isolation of ...



Learn about protective relays, their working principle, types, and applications in power systems. Discover how relays protect transformers, ...



Learn what is a relay, its main components, working principle, common types, and applications. Get usage tips and FAQs about relays for electrical control and safety.



Meeting this goal requires relays to accurately distinguish whether a fault is on the protected line, or external to it. The only way to accomplish this and to simultaneously trip all line ...



A fast and selective arc fault mitigation for air-insulated LV & MV switchgear and Relion protection and control relays and sensor technology protect staff and plant facilities for many years.



Types of protection relays are mainly based on their characteristic, logic, on actuating parameter and operation mechanism. Protective relays can be categorized based on their operating ...



This article covers various types of protective relays, such as overcurrent, directional, and differential relays, highlighting their operating characteristics and applications in electrical systems.



Feb 24, 2012· Types of protection relays are mainly based on their characteristic, logic, on actuating parameter and operation mechanism. Protective ...



Relay (Relay Financial), is an all-in-one business banking and money management platform helping businesses understand what they're earning, spending & saving.



Powered by electromagnets, a relay is simply a mechanical switch, and you'll find them all over a typical house or car. Find out what these simple components are doing in all your electrical ...



Learn how a relay works and how you can use it to turn on/off high-power devices with tiny signals. Includes practical circuit examples.

Contact Us

For more information, pricing, or custom solutions, please contact us:

Website: <https://indzawo.co.za>

Email: sales@indzawo.co.za

Phone: +27 71 296 8473

Address: 22 Quantum Street, Midrand, 1685, Gauteng, South Africa

This document is for informational purposes only. Specifications subject to change without notice.

