

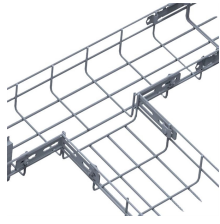
Requirements for Home Electrical Distribution Box Circuit Configuration



Overview

Check for proper IP/NEMA ratings and material quality. Ensure safe placement: install in dry, accessible areas with good ventilation and at appropriate height (typically ~1. This article guides you through selecting a distribution box that is both affordable and safe, emphasizing key features, configuration, and practical considerations. Circuit breaker wiring configurations involve organizing main switches, busbars, and branch breakers within a distribution box. Common configurations include single-phase for homes and three-phase for. Whether you're a homeowner looking to understand your electrical setup, an electrician seeking comprehensive guidance, or a facility manager planning an upgrade, understanding distribution boxes is vital for electrical safety and efficiency.

Requirements for Home Electrical Distribution Box Circuit Configuration



In this guide, we will break down the key elements involved in connecting the main power supply to your home, providing a clear path for a successful setup. We will focus on the critical parts of the system, ...



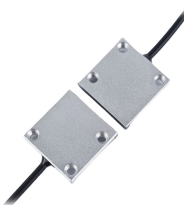
Different applications require different types of distribution boxes. Selecting the right type ensures optimal performance and compliance with relevant standards. Home distribution boxes ...



This article guides you through selecting a distribution box that is both affordable and safe, emphasizing key features, configuration, and practical considerations.



The latest NEC updates prioritize adaptive solutions for modern energy demands. With homes now packing solar arrays, EV chargers, and smart-home systems, distribution boxes work harder than ...



Master the safest and most efficient circuit breaker wiring configurations. Learn about single-phase vs. three-phase setups, safety standards, and future-proof electrical planning.



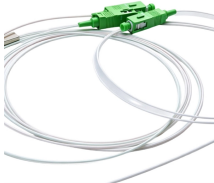
Master the safest and most efficient circuit breaker wiring configurations. Learn about single-phase vs. three-phase setups, safety standards, and future-proof electrical ...



Professional home circuit calculator per NEC Article 210 and 220. Determines the total number of branch circuits, wire sizes, breaker ratings, and GFCI/AFCI protection requirements for residential electrical ...



Choose the right size and setup for multiple circuit breakers in your distribution box to ensure safety, code compliance, and room for future upgrades.



Find out how to properly wire an electrical panel box with a comprehensive diagram and step-by-step instructions.



Learn how to install a distribution box safely and correctly. Covers wiring, placement, standards, and expert tips for a compliant setup.



The NEC sets requirements for residential systems, including boxes, grounding and outlets as well as rooms with higher energy demands such as kitchens.

Introduction Understanding The Components of A Distribution Box Selecting The Right Distribution Box Site Preparation and Location Requirements Electrical Connections and Wiring Compliance with Standards and Regulations Conclusion What Is a

Distribution Box? A distribution box, also known as a power distribution unit, is a critical component in any electrical system. It is the control center for electricity in your home or business. It takes the electrical power coming into the building and distributes it to different circuits. Each circuit then powers various device... Why Proper Installation Matters Installing a distribution box correctly is about more than just making sure the lights turn on. It's about safety, efficiency, and reliability. A poorly installed distribution box can lead to a host of problems. These include electrical fires, short circuits, and even complete power failures. Proper installation ensures tha... See more on eabel Published: Feb 7, 2025.

```
.rcimgcol .cico { background: #f5f5f5; } .b_drk .rcimgcol .cico, .b_dark .rcimgcol .cico { background: unset; } .b_imgSet .b_hList li.square_m, .b_imgSet .b_hList li.tall_m { width: 75px; } .b_imgSet .b_hList li.tall_mlb { width: 113px; } .b_imgSet .b_hList li.tall_mln { width: 96px; } .b_imgSet .b_hList li.wide_m { width: 128px; } .b_imgSet .b_Card .b_hList li { padding-left: 1px; padding-right: 9px; } .b_imgSet .b_Card .b_hList li.tall_wfn { width: 80px; padding-right: 6px; } .b_imgSet .b_Card .b_hList li:last-child { padding-right: 1px; } .b_imgSet .b_Card .b_imgSetData { padding: 0 8px 8px; height: 40px; } .b_imgSet .b_Card .b_imgSetItem { box-shadow: 0 0 0 1px rgba(0,0,0,.05), 0 2px 3px 0 rgba(0,0,0,.1); border-radius: 6px; overflow: hidden; } .b_imgSet .b_imgSetData p a { color: #444; outline-offset: 0; } .b_subModule .b_clearfix .b_mhdr .b_floatR .b_moreLink, .b_subModule .b_clearfix .b_mhdr .b_floatR .b_moreLink:visited, .b_subModule > .b_moreLink, .b_subModule > .b_moreLink:visited { color: #767676; } .b_imgSet .cico .b_placeholder { display: flex; justify-content: center; background-color: #f5f5f5; background-clip: content-box; } .b_imgSet .cico .b_placeholder a { display: flex; } .b_imgSet .cico .b_placeholder a img { width: 48px; height: 48px; margin: auto; } @media (max-width: 1362.9px) { #b_context .b_entityTP .b_imgSet li:nth-child(5) { display: none; } .b_imgSet .b_hList li.wide_m:nth-child(3) { display: none; } } @media (max-width: 1274.9px) { #b_context .b_entityTP .b_imgSet li:nth-child(4) { display: none; } .b_imgSet .b_hList li.wide_m:nth-child(2) { display: none; } } .rcimgcol .b_imgSet { content-visibility: auto; contain-intrinsic-size: 1px 124px; } .rcimgcol { height: 108px; padding-top: var(--smtc-gap-between-content-x-small); padding-bottom: var(--smtc-gap-between-content-x-small); } .b_algo:has(.b_agh) .rcimgcol { padding-top: var(--smtc-gap-between-content-xx-small); } .rcimgcol .b_imgSet { overflow: hidden; } .rcimgcol .b_imgSet ul { overflow-x: auto; overflow-y: hidden; white-space: nowrap; padding-left: 0; } .rcimgcol .b_imgSet ul::-webkit-scrollbar { -webkit-appearance: none; } .rcimgcol .b_imgSet .b_hList > li { padding-right: var(--smtc-padding-ctrl-text-side); } .rcimgcol .b_imgSet .cico { border-radius: unset; } .rcimgcol .b_imgSet .b_hList > li:first-child .cico, .rcimgcol .b_imgSet .b_hList > li:first-child .cico a { border-radius: unset; border-top-left-radius: var(--mai-smtc-corner-card-default); border-bottom-left-radius: var(--mai-smtc-corner-card-default); overflow: hidden; } .rcimgcol .b_imgSet .b_hList > li:last-child .cico, .rcimgcol .b_imgSet .b_hList > li:last-child .cico a { border-radius: unset; border-top-right-radius: var(--mai-smtc-corner-card-default); border-bottom-right-radius: var(--mai-smtc-corner-card-default); overflow: hidden; } .rcimgcol .rcimgcol .b_sideBleed { margin-left: unset; margin-right: unset; } .rcimgcol .b_imgclgovr { cursor: pointer; } .rcimgcol .b_imgclgovr .cico img: hover { transform: scale(1.05); transition: transform .5s
```

```
ease}#b_content #b_results>.b_algo .b_caption:has(.rcimgcol){padding-right:var(--mai-smtc-padding-card-default);margin-right:calc(-1*var(--mai-smtc-padding-card-default));margin-left:calc(-1*var(--mai-smtc-padding-card-default));padding-left:var(--mai-smtc-padding-card-default)}.rcimgcol .b_imgSet .b_hList .cico a{display:flex;outline-offset:-2px}.rcimgcol .b_hList>li{position:relative;padding-bottom:0}.rcimgcol .b_hList>li .iacf_smol{pointer-events:none;border-top-right-radius:var(--mai-smtc-corner-card-default);border-bottom-right-radius:var(--mai-smtc-corner-card-default);white-space:normal}.rcimgcol .b_hList .cico{margin-bottom:0}.iacf_smol{display:flex;justify-content:center;align-items:center;gap:var(--smtc-gap-between-content-xx-small);width:100%;height:100%;background:rgba(0,0,0,.6);position:absolute;left:0;top:0;color:var(--mai-smtc-foreground-ctrl-on-image-rest);font:var(--bing-smtc-text-global-body2-strong);flex-wrap:wrap;align-content:center;text-align:center}.iacf_smol:hover{text-decoration:underline}.iacfmit[data-nohov].iacfimgc .cico img{transform:none}wiringmaster
```

Contact Us

For more information, pricing, or custom solutions, please contact us:

Website: <https://indzawo.co.za>

Email: sales@indzawo.co.za

Phone: +27 71 296 8473

Address: 22 Quantum Street, Midrand, 1685, Gauteng, South Africa

This document is for informational purposes only. Specifications subject to change without notice.

