

## Requirements for cable tray supports installed along walls



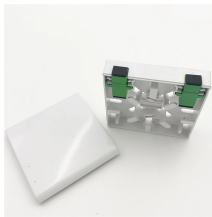
### Overview

The primary rulebook used in the safe use of cable trays is NEC Article 392. This is a description of how to select, install, and support these metal or plastic frames, on which electrical wires are installed. This guide covers the critical steps, from selecting the right electrical cable tray and performing accurate cable fill calculations to managing a safe cable pull through and ensuring all bonding and grounding requirements are met. You should consider it as a series of instructions that make the buildings resistant to. This article explains the main requirements and good practices for cable tray systems, including tray types, materials, loading, supports, bonding, cable selection, and installation details. A rung spacing of 6 to 9 inches (150 to 230 mm) is preferable when. In addition, a cable support system can be used to separate and arrange cables in groups. 305(a)(3), or comparable standards promulgated by States operating OSHA-approved State plans.

## Requirements for cable tray supports installed along walls



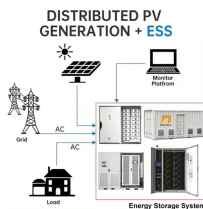
Hubbell's NEXTFRAME® Ladder Tray is the effective and widely used cable runway that supports and delivers bundles of cable between cabinets, racks, and closets, along walls, and suspended from ...



In making cable tray fill determinations, the best strategy is to review and follow the requirements of the NEC and the manufacturer's installation guides to determine the appropriate fill when installing cable ...



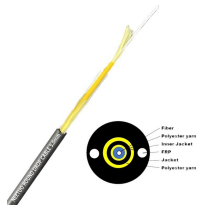
Cable tray supports must be designed and installed per IEC 61537, NEMA VE 2, NEC, and ISO standards, with proper spacing (1.5–3 m), alignment, earthing, fire protection, and structural...



This document provides details on installing cable trays and their support systems. It includes diagrams showing how to mount cable trays on walls using pre ...



Master NEC Article 392 with our comprehensive guide. Learn essential cable tray requirements for installation, grounding, and fill capacity to ensure full electrical compliance.



This guide covers the critical steps, from selecting the right electrical cable tray and performing accurate cable fill calculations to managing a safe cable pull through and ensuring all bonding and grounding ...



This guide covers the cable tray types and their appropriate applications, the fill rules for each configuration, ampacity derating requirements, separation of power and signal cables, and the ...



This article explains the main requirements and good practices for cable tray systems, including tray types, materials, loading, supports, bonding, cable selection, and installation details.



It specifies the requirements and testing for cable support systems, which are intended to support and house cables, as well as other electrical resources in electrical installations or communication systems.



Explore the essential cable tray support spacing requirements for safe and efficient installations. Learn NEC guidelines for perforated, ladder, and wire mesh trays.



This guide for engineers and installers has been developed by ABB as a practical reference regarding cable tray characteristics, installation, and requirements.

## Contact Us

For more information, pricing, or custom solutions, please contact us:

Website: <https://indzawo.co.za>

Email: [sales@indzawo.co.za](mailto:sales@indzawo.co.za)

Phone: +27 71 296 8473

Address: 22 Quantum Street, Midrand, 1685, Gauteng, South Africa

This document is for informational purposes only. Specifications subject to change without notice.

