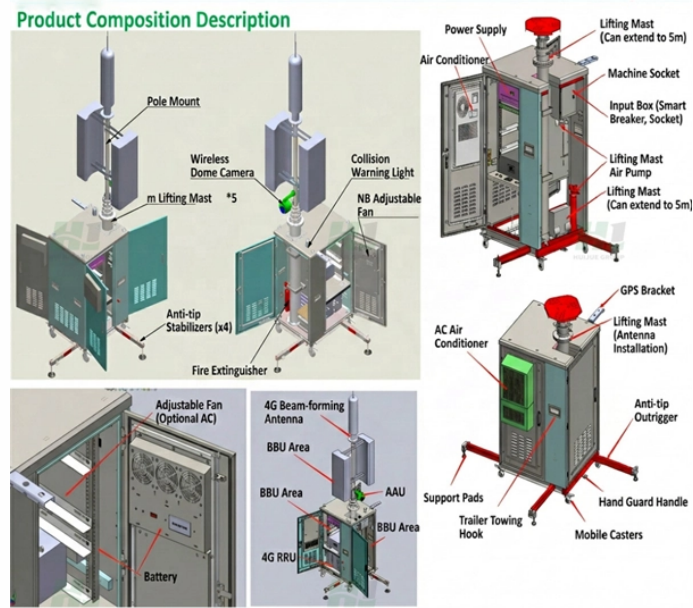


Requirements for installing electrical distribution boxes in vibrating environments



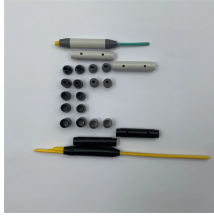
Overview

Choose the right box based on environment (indoor/outdoor), load capacity, and durability. Check for proper IP/NEMA ratings and material quality. Ensure safe placement: install in dry, accessible areas with good ventilation and at appropriate height (typically ~1. The installation requirements and specifications of Distribution box involve many aspects, including site selection, fixing method, wiring specifications and safety protection. 302 through. icle 110 sets the stage for how you'll implement the rest of the NEC. This article contains a few of the most important and yet neglected

– What's the right working clearance for a given icle, you're building your foundation for correctly applying the NEC. In fact, this article itself is a. This section covers the requirements for electric equipment and wiring in locations that are classified depending on the properties of the flammable vapors, liquids or gases, or combustible dusts or fibers that may be present therein and the likelihood that a flammable or combustible concentration. An outdoor

electrical distribution box serves as the critical junction point where incoming power lines are split into multiple branch circuits for outdoor installations, parking lots, building exteriors, and industrial facilities. Unlike standard junction boxes, these distribution systems must.

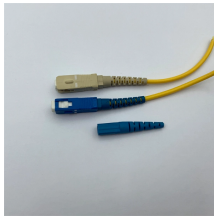
Requirements for installing electrical distribution boxes in vibrating



This specification guide provides system designers, electrical engineers, and procurement professionals with the technical criteria needed to select compliant outdoor electrical ...



Learn how to install a distribution box safely and correctly. Covers wiring, placement, standards, and expert tips for a compliant setup.



The installation requirements and specifications of Distribution box involve many aspects, including site selection, fixing method, wiring specifications and safety protection.



This article discusses requirements for companies and installers when designing and installing electrical systems in hazardous areas.



All electrical work shall comply with the requirements of NFPA 70 (NEC), NFPA 70B, NFPA 70E, OSHA Part 1910 subpart J - General Environmental Controls, OSHA Part 1910 subpart K - Medical and ...



WAC 296-46B Electrical Safety Standards, Administration, and Installation State of Washington L& I Electrical Program



This guide provides a complete breakdown of enclosure types, materials, certifications, temperature considerations, and installation insights to help engineers, designers, and safety ...



Note 1: Raceways, cable trays, cablebus, cable armor, boxes, cable sheathing, cabinets, elbows, couplings, fittings, supports, and support hardware must be of materials that are suitable for the ...



Introduction
 Understanding The Components of A Distribution Box
 Selecting The Right Distribution Box
 Site Preparation and Location Requirements
 Electrical Connections and Wiring
 Compliance with Standards and Regulations
 Conclusion
 Proper installation of a distribution box isn't just a technical requirement. It's a vital step in ensuring the safety and efficiency of your entire electrical system. Following best practices reduces the risk of electrical fires, power outages, and other hazards, protecting your property and keeping everyone safe. If you're looking for a reliable, ... See more on eabel
 Published: Feb 7, 2025
 eCFR



This documentation shall be available to those authorized to design, install, inspect, maintain, or operate electric equipment at the location.



Sections 1910.302 through 1910.308 contain design safety standards for electric utilization systems. Included in this category are all electric equipment and installations used to provide electric power ...

Contact Us

For more information, pricing, or custom solutions, please contact us:

Website: <https://indzawo.co.za>

Email: sales@indzawo.co.za

Phone: +27 71 296 8473

Address: 22 Quantum Street, Midrand, 1685, Gauteng, South Africa

This document is for informational purposes only. Specifications subject to change without notice.

