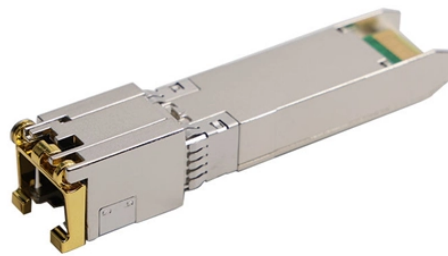


## Residential Distribution Box Wiring Installation



### Overview

Practice good wiring: secure grounding, neat cable management, proper insulation, and correct wire gauge and breaker size. Include protection devices like breakers, fuses, and surge protectors—each circuit should have its own protection. Comply with standards: Follow NEC, IEC . In this video, we'll walk you through the process of wiring a home distribution box with a detailed connection diagram. This article mainly talks about the first one. An electrical distribution box, also known as a power distribution box, panelboard, or consumer unit. What is an Electrical Panel Box?

An electrical panel box, also known as a breaker box or electrical distribution panel, is the central hub for electrical power in a building. Use. Electrical systems power our homes, offices, and industrial facilities, but behind every reliable electrical setup lies a crucial component that often goes unnoticed: the distribution box.

## Residential Distribution Box Wiring Installation



Before starting the installation, finding a proper place for putting the distribution box is crucial, because it largely decides the safety and convenience of maintenance. Let's see what factors ...



In this video, we'll walk you through the process of wiring a home distribution box with a detailed connection diagram.



Learn how to wire a distribution box step by step! This video shows real on-site footage of electrical installation, demonstrating safe and standardized wiring methods used by...



Box installation: Make sure that Distribution box has been correctly installed and fixed. Material preparation: Prepare the required circuit breakers, wires, wiring ties and other materials, and ...



In this video, we'll walk you through the process of wiring a home distribution box with a detailed connection diagram. Whether you're an electrician or a DIY enthusiast, this guide will help ...



Even if you're an experienced homeowner or contractor, the complexity of wiring a home's electrical distribution board can be daunting. That's why having a clear, detailed diagram of ...



Find out how to properly wire an electrical panel box with a comprehensive diagram and step-by-step instructions.



Learn how to install a distribution box safely and correctly. Covers wiring, placement, standards, and expert tips for a compliant setup.



Proper installation of a distribution box requires careful planning and adherence to electrical codes. While major installations should always involve qualified electricians, understanding ...



This article provides a detailed overview of the entire process of installing a distribution box, from pre-installation preparation to post-installation maintenance, and summarizes common ...

## Contact Us

For more information, pricing, or custom solutions, please contact us:

Website: <https://indzawo.co.za>

Email: [sales@indzawo.co.za](mailto:sales@indzawo.co.za)

Phone: +27 71 296 8473

Address: 22 Quantum Street, Midrand, 1685, Gauteng, South Africa

This document is for informational purposes only. Specifications subject to change without notice.

