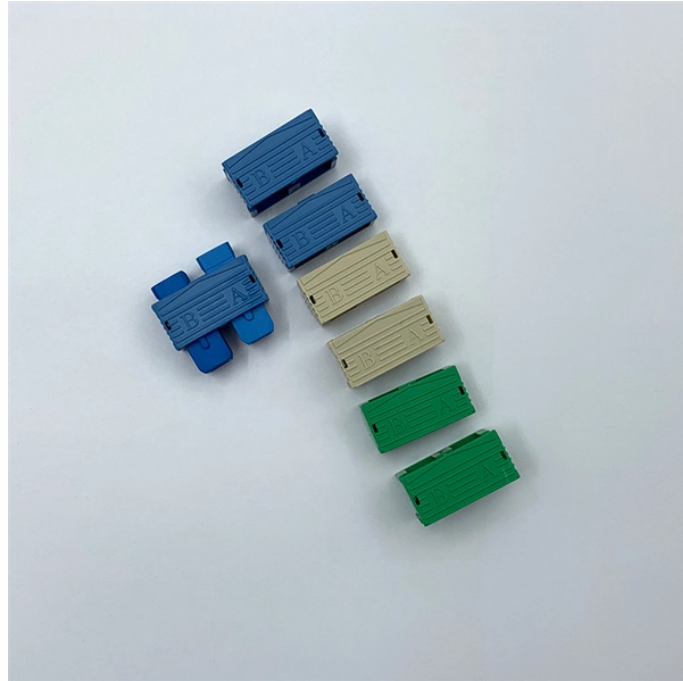
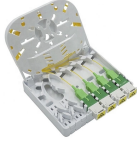


Rfog optical module



Rfog optical module



The RFoG standard is met by Baudcom's cutting-edge optical network units (R-ONUs). It makes advanced FTTH and FTTB topologies simple to deploy for cable providers.



RFoG is a simple way for multiple system operators to bring fiber to the home using their existing infrastructure. RFoG introduces a new component into the optical distribution network—the optical ...



USource TX1610nm/RX1550nm RFoG BOSA is a bi-directional Optical Sub-assembly module, it integrates 2.5G CWDM 1610nm DFB laser diode and ...



RFoG (Radio Frequency over Glass) combines the benefits of RF and fiber optics for seamless communication. This innovative architecture enables RF signals to travel over optical networks, ...



Sealight's RFoG repeater module (RRM) is a field-hardened, highly integrated RFoG module that contains all downstream & upstream RFoG repeater functionality. The RFoG repeater module is part ...



The EL-RRX is a member of the ELink series Optical Platform and is a CATV Return Path Receiver Module used in HFC and FTTX architectures having four optical inputs. The module contains a low ...



The RFoG WDM module is designed to satisfy wavelength management requirements where 1310, 1490, 1550 and 1590 / 1610nm wavelengths are used in passive optical network applications. This ...



RFoG series products are mainly used in CATV or PON networks. The fiber WDM transmission and PON Expansion Port support wavelengths of 1310nm and ...



The fiber-optic micro-nodes - which are also referred to as RFoG optical-networking units (R-ONUs) - terminate the fiber connection and convert traffic for delivery over the in-home network.



The 7820R RFoG return path optical receiver is a single-mode fiber pigtailed module featuring a low-noise, impedance-matched broadband photodiode and RF amplification.



USource TX1610nm/RX1550nm RFoG BOSA is a bi-directional Optical Sub-assembly module, it integrates 2.5G CWDM 1610nm DFB laser diode and 1550nm analog PIN photodiode in a coaxial ...



RFoG series products are mainly used in CATV or PON networks. The fiber WDM transmission and PON Expansion Port support wavelengths of 1310nm and 1490nm or 1270nm and 1577nm for G ...

Contact Us

For more information, pricing, or custom solutions, please contact us:

Website: <https://indzawo.co.za>

Email: sales@indzawo.co.za

Phone: +27 71 296 8473

Address: 22 Quantum Street, Midrand, 1685, Gauteng, South Africa

This document is for informational purposes only. Specifications subject to change without notice.

