

# Right-angle fiber optic sensor mounting base



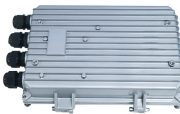
## Overview

The threaded tip features a 5/16 in - 24 thread, providing a reliable attachment point for compatible fiber optic components. Its compact and sturdy design makes it suitable for applications requiring precise alignment and stability. Sensor mounting brackets include fixed axial, right-angle, and swivel models. A right-angle fine-tune bracket enables precise placement; a bracket with ball-joint swivel adjusts sensor orientation. With years. Thorlabs' Right-Angle Mounting Adapters assist in creating sturdy three-dimensional optomechanical assemblies and are suited for setups of virtually any size. They can be used directly with mounted optomechanics or as supports for larger structures. Deflection mirror for ultrasonic sensors, for UMT 30-350, UMT 30-1300 Universal mounting angle, fine-adjustable, for round housings M12, M18 Mounting block / fiber mount for fiber-optic cables Mounting block / fiber mount for fiber-optic cables Mounting block / fiber mount for fiber-optic cables.

## Right-angle fiber optic sensor mounting base



Mouser offers inventory, pricing, & datasheets for Mounting Brackets Sensors.



OP-23980, Mounting Bracket in FS-N series by KEYENCE America.



Iwata Manufacturing offers specialized brackets and stands designed for sensors, with a thickness of 1.0 mm. These products provide secure and durable mounting solutions, ensuring that sensors are ...



Choose from our selection of sensor mounts, including sensor and switch mounting brackets, heavy duty ball-grip positioning arms, and more. Same and Next Day Delivery.



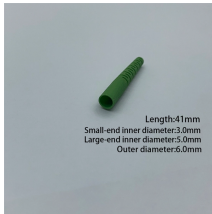
Products listed in this catalog offer the versatility and performance needed for industrial automation applications along with premium availability to help drive supply chain efficiency. Space saving, ...



The Banner Engineering SMBF Right-Angle Bracket is designed for secure mounting of glass fiber optic sensors. Constructed from 18-gauge stainless steel, this bracket ensures durability and resistance to ...



Sensor mounting brackets include fixed axial, right-angle, and swivel models. A right-angle fine-tune bracket enables precise placement; a bracket with ball-joint swivel adjusts sensor orientation.



Length:4.1mm  
Small-end inner diameter:3.0mm  
Large-end inner diameter:5.0mm  
Outer diameter:6.0mm

SMB Series Bracket Right Angle Stainless Steel (Mounting Hardware) | Thermoplastic Polyester (Bracket) QS18 | S18 | SM312 | T18 In Stock



Thorlabs' Right-Angle Mounting Adapters assist in creating sturdy three-dimensional optomechanical assemblies and are suited for setups of virtually any size. They can be used directly with mounted ...



Hot Products Electric Control System

Mounting block / fiber mount for fiber-optic cables. Mounting component for bars Ø 12 mm and square profiles 10 x 10 mm, for F 55 and FGL. Dovetail clamp mounting, adjustable, for F 25. Dovetail clamp ...

## Contact Us

For more information, pricing, or custom solutions, please contact us:

Website: <https://indzawo.co.za>

Email: [sales@indzawo.co.za](mailto:sales@indzawo.co.za)

Phone: +27 71 296 8473

Address: 22 Quantum Street, Midrand, 1685, Gauteng, South Africa

This document is for informational purposes only. Specifications subject to change without notice.

