

Routers and Aggregation Layer Switches



Routers and Aggregation Layer Switches



The best Wi-Fi routers are here to make the most out of your internet, from gigabit to multi-gig plans, with excellent download speeds, a far-reaching range to eliminate Wi-Fi dead zones and ...



We've tested over 60 of the most popular Wi-Fi routers on the market, and our picks for the best Wi-Fi routers for home use are below. Check out our R& D article to learn more about how ...



The aggregation layer connects to the uplinks of the edge switches and is uplinked to the distribution layer toward the network core. Generally, network managers are moving away from in-closet ...



This model allows the aggregation switches to easily accommodate thousands of devices passing through this layer while simplifying the design, maintenance, and operations. The following figure ...



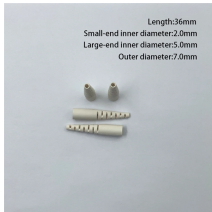
Aggregation services in routers and edge platforms help enable network edge routing. These devices combine traffic links at greater speeds to support the growing need for remote access to internal ...



An "Aggregation Router" is a device located in the services aggregation layer of a data center LAN that integrates important network services such as firewalls and server load balancers, allowing them to ...



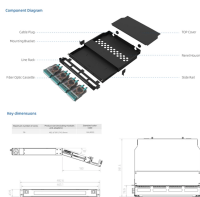
You can configure LAGs to connect a QFX Series product or an EX4600 switch to other switches, like aggregation switches, servers, or routers. This example describes how to configure LAGs to connect ...



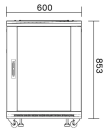
Routers keep your home network fast, stable, and ready for streaming, gaming, video calls, and connected devices throughout the day. Walmart helps you compare wifi routers, wireless routers, ...



CNET's recent lab testing measured throughput, jitter, latency and signal strength on more than 30 top routers to find the ones that deliver a fast, consistent internet connection.



Discover the crucial differences between core, aggregation, and access switches. Find out which type can best transform your network's performance in 2025.



User Access Networks
 The Edge Layer
 The Distribution and Aggregation Layer
 The CORE
 Data Center Networks
 Top-Of-Rack Switches
 Data Center Distribution Layer
 Data Center CORE Switch/Router Devices

In small networks of a few hundred users, edge switches can be connected redundantly directly to core switch/router devices. However, for larger networks,, an additional layer of switching, called the distribution layer, aggregates the edge switches. The main goal of the distribution layer is simply cabling reduction and network management, taking...
 See more on biztechmagazine ScienceDirect



Shop a wide selection of Routers wireless routers at Amazon from top brands including Netgear, ASUS, Linksys, and more.



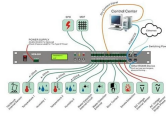
These days, your wireless router is not just your lifeline to the internet, but also to your job. We've hand-tested the top routers so you can find the right fit to build a snappy home Wi-Fi...



What is a router and how does it work? A router is a central part of any home Wi-Fi and networking setup, distributing your internet connection to multiple devices at once. It acts as a hub, directing ...



What Is an Aggregation Switch? An aggregation switch is a network device that consolidates traffic from multiple access switches, wireless access points, or other edge devices and ...



For this reason, we've delivered a data center-influenced standalone OLT architecture paired with non-blocking leaf-spine fabric and aggregation switching. A key characteristic of these leaf-spine ...



The best WiFi routers from brands like Asus, Netgear, and TP-Link provide fast, reliable WiFi throughout your home.



We've tested the latest Wi-Fi routers and found the best options—from budget models to top-of-the-line—to make your wireless network faster and more responsive.



This article wraps up "what is switch aggregation" and suggestions for choosing an aggregation switch. By considering these factors, network administrators can make informed ...



One of the really interesting ways of deploying an aggregated link is to connect a device to a redundant pair of central core or aggregation switches. That is, instead of being a bundle of links ...



We've tested a tremendous number of the best Wi-Fi routers on the market in our custom testing environment, creating an in-depth router benchmarking suite that measures performance in ...

Contact Us

For more information, pricing, or custom solutions, please contact us:

Website: <https://indzawo.co.za>

Email: sales@indzawo.co.za

Phone: +27 71 296 8473

Address: 22 Quantum Street, Midrand, 1685, Gauteng, South Africa

This document is for informational purposes only. Specifications subject to change without notice.

