

SA100A Relay Protection Tester



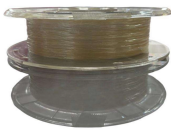
SA100A Relay Protection Tester



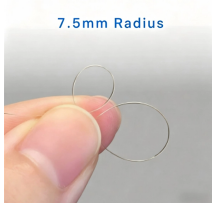
S100A is the Universal Single Phase Protection Relay Test Set with 1*100A and 3*150V output, local control system for basic relay testing with manual operation.



Ponovo S100A Single Phase Universal Protection Relay Test Set S100A is a Universal Single Phase Protection Relay Test Set with 1*100A and 3*150V output, local control system for ...

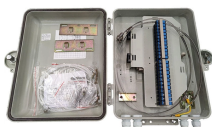


These ground-fault relay test units are used on substations, motor control centers, central distribution panels, switchboards, and test benches to verify relay operations. This product group also includes ...



7.5mm Radius

Compact, high-power relay test systems with IEC 61850 protection test capabilities and advanced touch interface. A software dedicated for commissioning and maintenance in digital substations. A ...

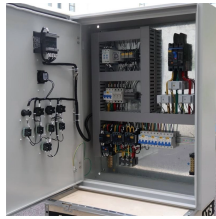


Functions

- Check timing and pick up value for AC/DC relay
- Check directional over current and df/dt
- Check pick-up, instant tripping, 2nd harmonic restraint of differential relay
- Check line protection ...



S100A is the Universal Single Phase Protection Relay Test Set with 1*100A and 3*150V output, local control system for basic relay testing with manual operation.



Discover our user-friendly, cost effective and lightweight single-phase relay testing solutions including precise performance analysis, error detection, and system optimisation for your needs, be it industrial ...



S100A Single Phase Universal Protection Relay Test Set S100A is a type of relay tester controlled by SCM. It is portable and easy to use.



Verify protection relays with speed and accuracy using Megger's single-phase test sets. Prevent faults, optimize system performance, and maintain network reliability—whether in conventional or digital ...

Contact Us

For more information, pricing, or custom solutions, please contact us:

Website: <https://indzawo.co.za>

Email: sales@indzawo.co.za

Phone: +27 71 296 8473

Address: 22 Quantum Street, Midrand, 1685, Gauteng, South Africa

This document is for informational purposes only. Specifications subject to change without notice.

