

Safety Hazard Standards for Distribution Boxes



Overview

We'll decode NEC Article 312 requirements, compare NEMA vs IP ratings, analyze busbar sizing calculations, and provide specification decision matrices for different applications. Design requirements for low voltage distribution boxes cover NEC, IEC, and safety standards to ensure reliable, compliant electrical installations. You must make safety your top priority when working with low voltage distribution boxes. Design requirements help you follow important standards like. Use OSHA's Frequently-Cited OSHA Standards search tool for the latest information on OSHA citations within the Warehousing and Storage industry group (NAICS code 4931) or any of its four subsectors: NAICS code 493110 (General Warehousing and Storage), 493120 (Refrigerated Warehousing and Storage). These model safety operating procedures for electric distribution utilities are primarily based upon regulations contained in the federal Occupational Safety and Health Administration (OSHA) performance standards for work on or near electric transmission and distribution lines and related work. An outdoor electrical distribution box serves as the critical junction point where incoming power lines are split into multiple branch circuits for outdoor installations, parking

lots, building exteriors, and industrial facilities. Unlike standard junction boxes, these distribution systems must. Since distribution boxes house critical electrical components, they must be designed to withstand various environmental conditions and meet strict safety standards. The Joint Commission recommends that when creating or revising IC-related policies, health care organizations apply a hierarchical method as.

Safety Hazard Standards for Distribution Boxes



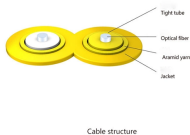
Complete specification guide for outdoor electrical distribution boxes covering NEC Article 312 requirements, NEMA ratings, sizing calculations, and selection criteria for commercial and ...



You need to understand the main standards and codes that guide the safe design and use of low voltage distribution boxes. These rules help you meet ...



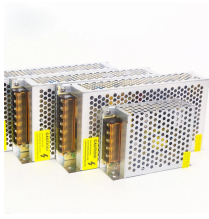
This commitment to compliance ensures that power distribution systems meet established safety and performance standards. It also provides a robust framework for the secure and efficient transmission ...



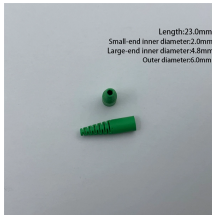
OSHA's NEP on Warehousing and Distribution Center Operations (CPL 03-00-026) applies OSHA-wide to warehousing and distribution centers, mail/postal processing and distribution centers, parcel ...



This risk assessment document summarizes the hazards, existing controls, additional controls needed, and residual risk levels associated with the installation of distribution boards and junction boxes.



In this guide, you'll learn about the national electrical code in detail, ensuring safety and preventing electrical hazards for all electrical installations.



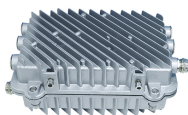
Warehouse safety isn't optional. Learn the key OSHA requirements and how smart design can keep your facility compliant—and your team protected.



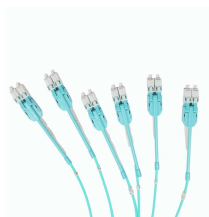
When organizations are making a determination as to whether these boxes and containers are appropriate to be located in a certain area, they should consider the potential adverse ...



Learn the key material requirements for distribution box, Discover how the right materials ensure long-lasting performance and safety.



You need to understand the main standards and codes that guide the safe design and use of low voltage distribution boxes. These rules help you meet legal requirements and keep your ...



It is suggested that each utility modify these procedures as appropriate. It is also important to note that while OSHA standards have been used to compile these procedures, some New England states ...

Contact Us

For more information, pricing, or custom solutions, please contact us:

Website: <https://indzawo.co.za>

Email: sales@indzawo.co.za

Phone: +27 71 296 8473

Address: 22 Quantum Street, Midrand, 1685, Gauteng, South Africa

This document is for informational purposes only. Specifications subject to change without notice.

