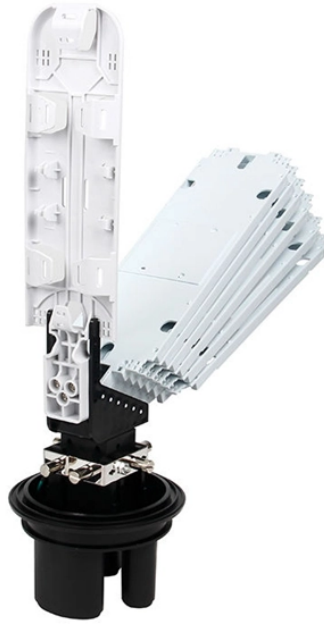


## Secondary distribution box connected to transformer



## Secondary distribution box connected to transformer



Often several customers are supplied from one transformer through secondary distribution lines. Commercial and residential customers are connected to the secondary distribution lines through ...



Secondary: Intermediate panel, routes power to buildings or zones. Tertiary: Final distribution point for equipment or household use. This structure ensures effective power management, safety, and ...



Generally, first level distribution does not allow direct use of electrical equipment, and second level distribution will be by power equipment because it is three-phase electricity, while third ...



Note: For Single Family Dwellings, with the exception of commercial customers fed from a separate transformer, all secondary services are served from a secondary pedestal connected to a transformer.



One bay unit includes circuit breaker, disconnect(s), measuring transformers and the local control and interface cabinet in one transportation unit. The unit has been factory-assembled and tested, offering ...



A low-voltage network or secondary network is a part of electric power distribution which carries electric energy from distribution transformers to electricity meters of end customers.



Secondary rigid or intermediate metal conduit that runs continuously to the building will not be grounded at the transformer since it will be grounded at the building per NEC requirements and this would ...



secondary unit substation is a close-coupled assembly consisting of enclosed primary high voltage equipment, three-phase power transformers, and enclosed secondary low-voltage ...



The Contractor shall provide compression type connectors and the Company shall install these connectors on the Contractor's conductors and connect to the secondary terminals of the ...



Utilities may have some control over and access to the energy stored in electric vehicles attached to the grid.

## Contact Us

For more information, pricing, or custom solutions, please contact us:

Website: <https://indzawo.co.za>

Email: [sales@indzawo.co.za](mailto:sales@indzawo.co.za)

Phone: +27 71 296 8473

Address: 22 Quantum Street, Midrand, 1685, Gauteng, South Africa

This document is for informational purposes only. Specifications subject to change without notice.

