

Security of Communication Base Station Towers



Security of Communication Base Station Towers



Typical levels from base stations in publicly accessible areas are far below international safety recommendations. This is comparable to radio and television broadcast services, which have ...



One significant threat to mobile network security is the presence of rogue base stations, often referred to as fake cell towers. These malicious devices can intercept, manipulate, and even ...



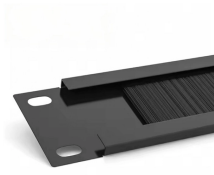
Cybercriminals may seek to gain control over the tower's base transceiver stations (BTS) and install monitoring software to intercept digital traffic or manipulate operational systems by ...



Are Cell Towers Safe? Health Risks, Science: As cellular infrastructure rapidly expands, so do concerns about health and safety risks—especially for children and those living near towers. Growing scientific ...



The security of base stations and cell towers is crucial to prevent unauthorized access and cyber attacks that could disrupt network service. Building resilience into cellular infrastructure is ...



As 5G deployments accelerate globally, communication base station safety standards face unprecedented challenges. Did you know that 68% of urban base stations now operate beyond ...



Cell phone tower base station safety and security systems incorporate a multifaceted approach to safeguard the critical infrastructure and ensure uninterrupted communication services.



These capabilities aim to enhance our customers' security posture by better protecting the network and detecting RAN-specific threats. Together these capabilities constitute the Ericsson ...



So it is important to protect wireless base stations and cell towers with remote cellular security cameras as well as remote security guards and other measures.



Discover strategies for monitoring Base Transceiver Stations to maintain telecommunications infrastructure and meet SLAs.



The wireless technology becomes the backbone of the nowadays communication system. In wireless communication networks such as Mobile communication, Base Station.



This document discusses the main physical factors that may lead to network outages and some innovative approaches to prevent telecom base stations breakdown ...



It is to design a wireless communication base station monitoring system based on artificial intelligence and network security.



Cell towers are vital to modern communication, ensuring connectivity and public safety. However, they increasingly face threats from theft, vandalism, activism, and accidental damage.

Contact Us

For more information, pricing, or custom solutions, please contact us:

Website: <https://indzawo.co.za>

Email: sales@indzawo.co.za

Phone: +27 71 296 8473

Address: 22 Quantum Street, Midrand, 1685, Gauteng, South Africa

This document is for informational purposes only. Specifications subject to change without notice.

