

## Select busbar connection method



### Overview

Joints need to be mechanically strong, resistant to environmental effects and have a low resistance that can be maintained over the load cycle and throughout the life of the joint. 2 Busbar Jointing Methods Efficient joints in copper busbar conductors can be made very simply by. There are many situations where it is necessary to join two busbars to create a single, unified unit. This process, called "jointing," may be needed to create a longer busbar from shorter, more manageable pieces; or to create a T-shaped tap-off connection from the main busbar. The result of. This article aims to shed light on the importance of proper busbar connections, the different materials used in busbars, the types of busbars, the techniques employed for their connections, and their current carrying capacity. 2 How are bus bars connected?

3. 3 What is the. Busbars are conductors in switchgear that collect, distribute, and transmit electrical energy. They connect the power source (such as the output terminal of a transformer) to various branches (such as the incoming terminals of circuit breakers), acting as a transfer station for electrical energy.

North America Copper Busbar.

## Select busbar connection method



Busbar selection guide for switchgear: current capacity, material choice, and design considerations for electrical distribution.



SELECT definition: 1. to choose a small number of things, or to choose by making careful decisions: 2. of only the... Learn more.



This process, called “jointing,” may be needed to create a longer busbar from shorter, more manageable pieces; or to create a T-shaped tap-off connection ...



Soldered or brazed joints are rarely used for busbars unless they are reinforced with bolts or clamps since heating under short-circuit conditions can make them both mechanically and ...



Learn about the different methods of connecting bus bars and how they are used in electrical systems. Get insights into the importance of proper bus bar connections.



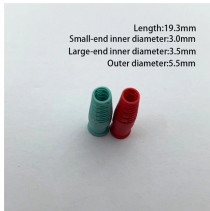
To select something means to choose it from among others. If you select the most expensive phone, it doesn't necessarily mean you will be happy with what you get. You can use select as an adjective as ...



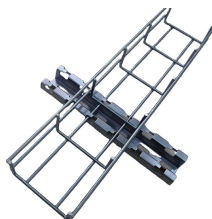
1. to choose in preference to another or others. 2. to make a choice; pick. 3. chosen in preference to another or others; preferred. 4. choice; of special value or excellence. 5. careful in choosing; ...



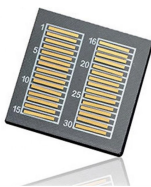
Busbar systems are the backbone of industrial low-voltage panels, switchboards, and distribution assemblies. A correctly designed busbar arrangement delivers high current density, compact ...



Imagine transforming a chaotic web of electrical connections into a streamlined, efficient powerhouse. Busbars are the unsung heroes of electrical panels,



This process, called "jointing," may be needed to create a longer busbar from shorter, more manageable pieces; or to create a T-shaped tap-off connection from the main busbar.



Assemble the busbar connection while installing each cubicle. The busbar shims and hardware bag in the cubicle packaging. Access the busbars through the side access of the cubicle. NOTE: It is also ...



Learn efficient copper busbar jointing techniques: bolted, clamped, riveted, soldered, and welded. Understand joint resistance and best practices.



To mount a bus bar to an assembly structure, hardware (studs, holes, etc.) can be manufactured into the conductors. An alternative ground plane may be added as support for the bus bar assembly and to ...



The `<select>` element has some unique attributes you can use to control it, such as `multiple` to specify whether multiple options can be selected, and `size` to specify how many options ...



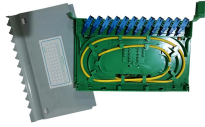
Find a Select Physical Therapy location near you. Experience the power of physical therapy to reduce pain, restore function to the body and prevent injury.



This paper discusses the advantages and limitations of cable connections, rigid bus bar connection and flexible bus bar connections for high current density applications.



HTML `<select>` tag is used to create a drop-down list of options, which appears when the user clicks on a form element, and it allows the user to choose one of the options.



Welcome! You've landed on the entry point for Select Medical employees. We are 45,000+ people strong helping more than 1.2M patients per day recover and get back to the people and activities ...



Busbar selection guide for switchgear: current capacity, material choice, and design considerations for electrical distribution.



Learn how switchboard busbars are designed, sized, and verified to IEC/UL. Compare Cu vs Al, spacing, and testing. Download the RFQ checklist.



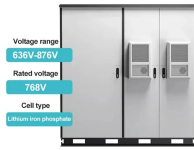
If you describe something as select, you mean it has many desirable features, but is available only to people who have a lot of money or who belong to a high social class.



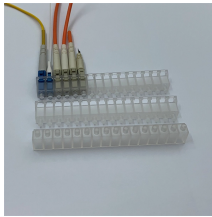
With busbar power, there is less bending, drilling, and tapping copper in preparation for deployment, and panels utilizing busbar can be mounted and installed in a fraction of the time compared to block-and ...



Ever wondered how busbars, the unsung heroes of electrical distribution, are processed and installed? This article delves into the intricate steps of busbar selection, preparation, and ...



The meaning of SELECT is chosen from a number or group by fitness or preference. How to use select in a sentence.



The `<option>` tags inside the `<select>` element define the available options in the drop-down list. Tip: Always add the `<label>` tag for best accessibility practices!

## Contact Us

For more information, pricing, or custom solutions, please contact us:

Website: <https://indzawo.co.za>

Email: [sales@indzawo.co.za](mailto:sales@indzawo.co.za)

Phone: +27 71 296 8473

Address: 22 Quantum Street, Midrand, 1685, Gauteng, South Africa

This document is for informational purposes only. Specifications subject to change without notice.

